

AUSTRALIAN AMALGAMATED TERMINALS PTY LTD (AAT)

SEMI-ANNUAL COMPLIANCE REPORT

DATE OF REPORT: 20th February, 2020

REPORT PERIOD: 1st July 2019 TO 31st December 2019

KPI	Kembla			Brisbane		
		Average time	Explanation		Average time	Explanation
<p><b>KPI 1 Truck Turnaround Time</b></p> <p>Average time spent at the terminal picking up or delivering cargo, measured from gate entry through to departure from terminal</p>	<b>Quarter 1</b>			<b>Quarter 1</b>		
	Automobiles - Qube	44 mins		Automobiles - Qube	37 mins	
	Automobiles - non-Qube	50 mins		Automobiles - non-Qube	38 mins	
	Breakbulk - Qube	1 hr 12mins		Breakbulk - Qube	1 hr 11mins	
	Breakbulk - non-Qube	1 hr 19mins		Breakbulk - non-Qube	1 hr 15 mins	
	<b>Quarter 2</b>			<b>Quarter 2</b>		
	Automobiles - Qube	45 mins		Automobiles - Qube	38 mins	
	Automobiles - non-Qube	49 mins		Automobiles - non-Qube	35 mins	
	Breakbulk - Qube	1 hr 12 mins		Breakbulk - Qube	1 hr 09 mins	
	Breakbulk - non-Qube	1 hr 22 mins		Breakbulk - non-Qube	1 hr 08 mins	
<p><b>KPI 2 Yard Dwell Time - Imports</b></p> <p>Average time cargo units stayed at the designated cargo pick-up area of the terminal, measured from announced time for pick-up to actual pick-up</p>		Average time	Explanation		Average time	Explanation
	<b>Quarter 1</b>			<b>Quarter 1</b>		
	Automobiles - Qube	63 hrs 13 mins		Automobiles - Qube	66 hrs 03 mins	
	Automobiles - non-Qube	60 hrs 12 mins		Automobiles - non-Qube	65 hrs 18 mins	
	Breakbulk - Qube	52 hrs 33 mins		Breakbulk - Qube	62 hrs 41 mins	
	Breakbulk - non-Qube	71 hrs 15 mins		Breakbulk - non-Qube	43 hrs 41 mins	
	<b>Quarter 2</b>			<b>Quarter 2</b>		
	Automobiles - Qube	83 hrs 55 mins		Automobiles - Qube	66 hrs 23 mins	
	Automobiles - non-Qube	71 hrs 35 mins		Automobiles - non-Qube	60 hrs 16 mins	
	Breakbulk - Qube	57 hrs 25 mins		Breakbulk - Qube	70 hrs 10 mins	
	Breakbulk - non-Qube	82 hrs 41 mins		Breakbulk - non-Qube	45 hrs 08 mins	
<p><b>KPI 3 Yard Dwell Time - Exports</b></p> <p>Average time export cargo units stayed at the designated cargo pick-up area of the terminal waiting to be loaded onto a vessel, once the cargo is ready to be loaded.</p>		Average time	Explanation		Average time	Explanation
	<b>Quarter 1</b>			<b>Quarter 1</b>		
	Automobiles - Qube	154 hrs 23 mins		Automobiles - Qube	152 hrs 59 mins	
	Automobiles - non-Qube	144 hrs 03 mins		Automobiles - non-Qube	119 hrs 47 mins	
	Breakbulk - Qube	211 hrs 16 mins		Breakbulk - Qube	151 hrs 26 mins	
	Breakbulk - non-Qube	137 hrs 22 mins		Breakbulk - non-Qube	127 hrs 39 mins	
	<b>Quarter 2</b>			<b>Quarter 2</b>		
	Automobiles - Qube	142 hrs 08 mins		Automobiles - Qube	149 hrs 04 mins	
	Automobiles - non-Qube	172 hrs 42 mins		Automobiles - non-Qube	133 hrs 00 mins	
	Breakbulk - Qube	248 hrs 55 mins		Breakbulk - Qube	159 hrs 16 mins	
	Breakbulk - non-Qube	135 hrs 13 mins		Breakbulk - non-Qube	133 hrs 13 mins	

<p><b>KPI 4 Berthing Allocation Changes</b></p> <p>Number of incidents where there was a delay in start of stevedoring operations due to deviation between planned allocation of berth and actual allocation, where AAT was responsible for such deviation.</p>		Number of Incidents	Explanation		Number of Incidents	Explanation
	<b>Quarter 1</b>			<b>Quarter 1</b>		
	Qube	<b>Zero</b>		Qube	<b>Zero</b>	
	Non-Qube	<b>Zero</b>		Non-Qube	<b>Zero</b>	
	<b>Quarter 2</b>			<b>Quarter 2</b>		
	Qube	<b>Zero</b>		Qube	<b>Zero</b>	
	Non-Qube	<b>Zero</b>		Non-Qube	<b>Zero</b>	
<p><b>KPI 5 Mooring Services</b></p> <p>Number of incidents where there was a delay in the mooring of vessels due to a deviation between planned berth allocation and actual allocation, where AAT was responsible for such deviation.</p>		Number of Incidents	Explanation		Number of Incidents	Explanation
	<b>Quarter 1</b>			<b>Quarter 1</b>		
	Qube	<b>Zero</b>		Qube	<b>Zero</b>	
	Non-Qube	<b>Zero</b>		Non-Qube	<b>Zero</b>	
	<b>Quarter 2</b>			<b>Quarter 2</b>		
	Qube	<b>Zero</b>		Qube	<b>Zero</b>	
	Non-Qube	<b>Zero</b>		Non-Qube	<b>Zero</b>	
<p><b>KPI 6 Allocation of first point of rest area</b></p> <p>Data showing, for each cargo shipment:</p> <p>a) berth allocated to vessel</p> <p>b) allocated storage area in the Terminal Layout Plan for the cargo's first</p> <p><b>This data can be set out in an Attachment to this Compliance Report</b></p>		Explanation			Explanation	
		<b>Refer to Attachment A</b>			<b>Refer to Attachment</b>	
<p><b>KPI 7 Equipment Availability</b></p> <p>Number of deviations between AAT equipment requested by stevedore or by shipping line and actual machinery provided (including standard of equipment, age, type and capacity)</p>		Number of Incidents	Explanation		Number of Incidents	Explanation
	<b>Quarter 1</b>			<b>Quarter 1</b>		
	Qube	<b>Zero</b>	Notations on Data Sheets refer to instance	Qube	<b>Zero</b>	
	Non-Qube	<b>Zero</b>	Notations on Data Sheets refer to instance	Non-Qube	<b>Zero</b>	
	<b>Quarter 2</b>			<b>Quarter 2</b>		
	Qube	<b>Zero</b>		Qube	<b>Zero</b>	
	Non-Qube	<b>Zero</b>		Non-Qube	<b>Zero</b>	

<p><b>KPI 8 Mechanical Support</b></p> <p>Average time lost in excess of one hour due to failure of AAT in providing mechanical breakdown support, reported from the time Mechanical Engineer officially notified to the time the issue was resolved.</p>						
		Average time lost	Explanation		Average time lost	Explanation
	<b>Quarter 1</b>			<b>Quarter 1</b>		
	Qube	<b>Zero</b>		Qube	<b>Zero</b>	
	Non-Qube	<b>Zero</b>		Non-Qube	<b>Zero</b>	
	<b>Quarter 2</b>			<b>Quarter 2</b>		
	Qube	<b>Zero</b>		Qube	<b>Zero</b>	
	Non-Qube	<b>Zero</b>		Non-Qube	<b>Zero</b>	
<p><b>KPI 9 Cargo dwell time over free time/long terms storage</b></p> <p>Time cargo units stay over free time, excluding Customs, DAFF and customer hold.</p>		Units/percentage	Explanation		Units/percentage	Explanation
	<b>Services to Qube</b>			<b>Services to Qube</b>		
	<b>Quarter 1</b>			<b>Quarter 1</b>		
	Total Cargo Units	<b>46,948</b>		Total Cargo Units	<b>61,720</b>	
	Units staying over free time	<b>8,050</b>		Units staying over free time	<b>11,271</b>	
	Units over free time due Customs/Daff or customer	<b>362</b>		Units over free time due Customs/Daff or customer	<b>23</b>	
	Units staying over free time excluding Customs etc. as percentage of total units	<b>16%</b>		Units staying over free time excluding Customs etc. as percentage of total units	<b>18%</b>	
	<b>Quarter 2</b>			<b>Quarter 2</b>		
	Total Cargo Units	<b>40,631</b>		Total Cargo Units	<b>51,203</b>	
	Units staying over free time	<b>8,474</b>		Units staying over free time	<b>5,241</b>	
	Units over free time due Customs/Daff or customer	<b>60</b>		Units over free time due Customs/Daff or customer	<b>27</b>	
	Units staying over free time excluding Customs etc. as percentage of total units	<b>21%</b>		Units staying over free time excluding Customs etc. as percentage of total units	<b>10%</b>	
	<b>Services to non-Qube</b>			<b>Services to non-Qube</b>		
	<b>Quarter 1</b>			<b>Quarter 1</b>		
	Total Cargo Units	<b>15,878</b>		Total Cargo Units	<b>19,327</b>	
	Units staying over free time	<b>2,448</b>		Units staying over free time	<b>4,395</b>	
	Units over free time due Customs/Daff or customer	<b>7</b>		Units over free time due Customs/Daff or customer	<b>7</b>	
	Units staying over free time excluding Customs etc. as percentage of total units	<b>15%</b>		Units staying over free time excluding Customs etc. as percentage of total units	<b>23%</b>	
	<b>Quarter 2</b>			<b>Quarter 2</b>		
Total Cargo Units	<b>15,272</b>		Total Cargo Units	<b>18,147</b>		
Units staying over free time	<b>2,183</b>		Units staying over free time	<b>2,678</b>		

	Units over free time due Customs/Daff or customer	5		Units over free time due Customs/Daff or customer	4		
	Units staying over free time excluding Customs etc. as percentage of total units	14%		Units staying over free time excluding Customs etc. as percentage of total units	15%		
<b>KPI 10 Confidentiality and ring-fencing</b>		Number of Complaints	Explanation		Measurement	Explanation	
	Number of complaints received by AAT concerning non-compliance with Clause 6 of the Undertaking	<b>Quarter 1</b>		<b>Quarter 1</b>			
		Complaints for Non-Compliance with Clause 6		Complaints for Non-Compliance with Clause 6			
		Services to Qube	Zero		Services to Qube	Zero	
		Services to non-Qube	Zero		Services to non-Qube	Zero	
		Breaches of Clause 6 Clause 6		Breaches of Clause 6 Clause 6			
		Services to Qube	Zero		Services to Qube	Zero	
	Services to non-Qube	Zero		Services to non-Qube	Zero		
	Number of instance of breaches of Clause 6	<b>Quarter 2</b>		<b>Quarter 2</b>			
		Complaints for Non-Compliance with Clause 6		Complaints for Non-Compliance with Clause 6			
		Services to Qube	Zero		Services to Qube	Zero	
		Services to non-Qube	Zero		Services to non-Qube	Zero	
		Breaches of Clause 6 Clause 6		Breaches of Clause 6 Clause 6			
		Services to Qube	Zero		Services to Qube	Zero	
<b>KPI 11 Complaints</b>	<b>Quarter 1</b>		<b>Quarter 1</b>				
	Complaints Under Price and non-Price Dispute Resolution Process		Complaints Under Price and non-Price Dispute Resolution Process				
	Services to Qube	Zero		Services to Qube	Zero		
	Services to non-Qube	Zero		Services to non-Qube	Zero		
	Details of complaint and outcome	Attach as Annex		Details of complaint and outcome	Attach as Annex		
	<b>Quarter 2</b>		<b>Quarter 2</b>				
	Complaints Under Price and non-Price Dispute Resolution Process		Complaints Under Price and non-Price Dispute Resolution Process				
	Services to Qube	Zero		Services to Qube	Zero		
	Services to non-Qube	Zero		Services to non-Qube	Zero		
	Details of complaint and outcome	Attach as Annex		Details of complaint and outcome	Attach as Annex		
	Number of complaints raised under the Price Dispute Resolution Process and the Non-Price Resolution Process under the Undertaking	<b>Quarter 1</b>		<b>Quarter 1</b>			
		Complaints Under Price and non-Price Dispute Resolution Process		Complaints Under Price and non-Price Dispute Resolution Process			
		Services to Qube	Zero		Services to Qube	Zero	
		Services to non-Qube	Zero		Services to non-Qube	Zero	
Details of complaint and outcome		Attach as Annex		Details of complaint and outcome	Attach as Annex		
<b>Quarter 2</b>		<b>Quarter 2</b>					
Complaints Under Price and non-Price Dispute Resolution Process		Complaints Under Price and non-Price Dispute Resolution Process					
Services to Qube		Zero		Services to Qube	Zero		
Services to non-Qube		Zero		Services to non-Qube	Zero		
Details of complaint and outcome		Attach as Annex		Details of complaint and outcome	Attach as Annex		

**PART B: TERMINAL LAYOUT PLAN FOR EACH TERMINAL**

See attachment

**PART C: TERMINAL USERS IN WHICH QUBE OR A QUBE RELATED ENTITY HAS AN INTEREST**

See attachment

NUMBER	DATE	STEVE-DORE	VESSEL	VOYAGE	STARTING SHIFT	BERTH #	BERTH DELAY	LAYDOWN	MACHINERY REQUEST RECEIVED	MACHINERY REQUEST FILLED	MACHINERY ISSUES	NOTES	DATA ADMIN SUMMARY RECEIVED	NUMBER OF WORKING DAYS PRIOR TO VESSEL ARRIVAL THAT DATA ADMIN WAS RECEIVED
1	1/07/2019	QUBE	JACOB OLDENDORFF	1	DAY	103	Y	DIRECT TO TRUCK	Y	Y		VESSEL ETA 19/06/19 - DELAYED DUE TO AFRICAN STARLING STILL WORKING	26/06/2019	2
2	2/07/2019	LINX	HOEGH TRAPPER	17	EVE	107	N	E SHED EAVES, G SHED EAVES, C BLOCK, GSHED AND I BLOCK	Y	Y			27/06/2019	4
3	2/07/2019	QUBE	LEANNE AUERBACH	4	EVE	106	N	L BLOCK	Y	Y			27/06/2019	3
4	3/07/2019	QUBE	CARRERA	1912	DAY	105	N	D BLOCK, F BLOCK, K BLOCK, PSHED AND 105STR	Y	Y		F AND D BLOCK UTILISED DSUE TO VENUS LEADER DISCHARGING FROM 106 IN H BLOCK	28/06/2019	2
5	3/07/2019	LINX	VENUS LEADER	11	EVE	106	N	H BLOCK, I BLOCK, L BLOCK, M BLOCK AND P SHED	Y	Y			1/07/2019	2
6	4/07/2019	LINX	SELENE LEADER	29	DAY	106	N	D BLOCK, F BLOCK, H BLOCK, K BLOCK AND PSHED	Y	Y			2/07/2019	2
7	5/07/2019	QUBE	FIGARO	CF915	DAY	107	N	E SHED EAVES, G SHED EAVES, 107CON, LINKSPAN, A BLOCK, C BLOCK, E SHED, GSHED AND I BLOCK	Y	Y			3/07/2019	2
8	8/07/2019	LINX	HOEGH ASIA	145	DAY	106	N	F BLOCK, H BLOCK, K BLOCK, M BLOCK AND P SHED	Y	Y			4/07/2019	2
9	8/07/2019	QUBE	OREGON HIGHWAY	102	EVE	107	N	E SHED EAVES, G SHED EAVES, A BLOCK, C BLOCK AND E SHED	Y	Y			3/07/2019	2
10	9/07/2019	QUBE	MORNING LENA	CO922	EVE	107	N	C BLOCK, D BLOCK, ESHED, I BLOCK AND LOT13	Y	Y		D BLOCK UTILISED AS A BLOCK WAS FULL	4/07/2019	3
11	10/07/2019	QUBE	MELANESIAN CHIEF	1908W	DAY	106	N	G SHED AND M BLOCK	Y	Y			5/07/2019	3
12	11/07/2019	QUBE	NOBLE ACE	72	DAY	105	N	H BLOCK, P SHED AND N BLOCK	Y	Y			4/07/2019	4
13	11/07/2019	QUBE	ADRIATIC HIGHWAY	106	DAY	107	N	107CON, A BLOCK, C BLOCK AND D BLOCK	Y	Y		D BLOCK UTILISED DUE TO INSUFFICIENT SPACE IN A AND C BLOCKS	9/07/2019	2
14	11/07/2019	QUBE	LOWLANDS SCHELDT	619	EVE	105	N	DIRECT TO TRUCK	Y	Y			8/07/2019	4
15	12/07/2019	LINX	CENTAURUS LEADER	14	DAY	106	N	F BLOCK, H BLOCK, I BLOCK, 106STR, M BLOCK AND P SHED	Y	Y			11/07/2019	1
16	12/07/2019	LINX	HOEGH AFRICA	113	DAY	107	N	107CON, C BLOCK, ESHED AND I BLOCK	Y	Y			10/07/2019	2
17	12/07/2019	QUBE	GLOBAL FUTURE	29	DAY	103	Y	DIRECT TO TRUCK	Y	Y		VESSEL ETA 08/07/19 - DELAYED DUE TO JACOB OLDENDORFF STILL WORKING	8/07/2019	3
18	13/07/2019	QUBE	TRANS FUTURE 5	117	DAY	107	N	A BLOCK, C BLOCK AND USED 1	Y	Y			10/07/2019	3
19	14/07/2019	QUBE	ARCADIA HIGHWAY	200	DAY	106	Y	F BLOCK, H BLOCK, K BLOCK, L BLOCK AND P SHED	Y	Y		UNABLE TO BERTH ON ARRIVAL DUE TO HIGH WINDS - BERTHING DELAYED BY 24HRS	12/07/2019	1
20	14/07/2019	QUBE	TAMERLANE	CF916	EVE	107	N	G SHED EAVES, C BLOCK, D BLOCK, E SHED AND G SHED	Y	Y		D BLOCK USED DUE TO A BLOCK BEING FULL	11/07/2019	2
21	16/07/2019	QUBE	ORCA ACE	8	EVE	107	N	E SHED EAVES, 107CON, A BLOCK AND C BLOCK	Y	Y		VESSEL BERTHED INTO 107 (MOL) AS ALLTHE AVAILABLE SPACE WAS CLOSER TO VESSEL (IN A AND C BLOCKS)	9/07/2019	5
22	17/07/2019	QUBE	LAKE TAUPO	1913	DAY	106	N	D BLOCK, USED2, I BLOCK AND L BLOCK	Y	Y		D BLOCK UTILISED AS H AND F BLOCKS FULL DUE TO PREVIOUS VESSELS TAKING SPACE	11/07/2019	4
23	14/07/2019	QUBE	TRANS FUTURE 5	115	NIGHT	107	N	A BLOCK, C BLOCK AND USED 1	Y	Y			10/07/2019	3
24	18/07/2019	QUBE	BLUE RIDGE HIGHWAY	91	DAY	107	N	A BLOCK AND C BLOCK	Y	Y			15/07/2019	3
25	18/07/2019	QUBE	GRAND COSMO	100	EVE	106	N	F BLOCK, H BLOCK AND K BLOCK	Y	Y			15/07/2019	3
26	19/07/2019	QUBE	WALRUS ACE	6	DAY	107	N	107CON, A BLOCK, B BLOCK, C BLOCK, D BLOCK, ESHED AND I BLOC	Y	Y		B AND D BLOCKS USED DUE TO ONLY AVAILABLE SPACE. VESSEL BERTHED INTO 107 (MOL) AS ALLTHE AVAILABLE SPACE WAS CLOSER TO VESSEL.	17/07/2019	2
27	20/07/2019	QUBE	MORNING CELINE	CO924	DAY	106	N	E SHED, F BLOCK, H BLOCK, USED2, K BLOCK, M BLOCK AND P SHED	Y	Y			17/07/2019	3
28	21/07/2019	QUBE	TUGELA	CF904	DAY	107	N	107CON, LINKSPAN, C BLOCK, D BLOCK, ESHED, GSHED, F BLOCK, I BLOCK AND LOT 13	Y	Y		D AND F BLOCKS UTILISED AS NOT ENOUGH AVAILABLE SPACE IN A BLOCK (1600 UNITS)	18/07/2019	2
29	21/07/2019	LINX	AAL HONG KONG	906ES	DAY	106	N	L BLOCK & G SHED	Y	Y			17/07/2019	3
30	22/07/2019	QUBE	PALMELA	167	DAY	107	N	E AND G SHED EAVES, 107CON, A BLOCK, B BLOCK, USED1 AND GSHED	Y	Y		B BLOCK USED DUE TO BEST AVAILABLE SPACE DUE TO C BLOCK BEING FULL. VESSEL BERTHED INTO 107 (MOL) AS MNORE SPACE AVAILABLE CLOSER TO VESSEL AND THE AAL HONG KONG WAS LOANGSIDE AT BERTH 106.	18/07/2019	2
31	22/07/2019	LINX	VIRGO LEADER	24	EVE	105	N	B BLOCK, D BLOCK, F BLOCK, H BLOCK, J BLOCK, M BLOCK AND P SHED	Y	Y		4 DIFFERENT BLOCKS UTILISED DUE TO VOLUMES PRIOR TO VESSEL AND WEEKEND WITH NO PDI MOVEMENTS	18/07/2019	2
32	23/07/2019	QUBE	JUMERIAH BEACH	1923	EVE	105	Y	DIRECT TO TRUCK	Y	Y		VESSEL ETA 20/07/19 - DELAYED DUE TO VIRGO LEADER STILL WORKING AND THE AAL HONG KONG AT 106 (GENERAL CARGO VESSEL)	16/07/2019	5
33	24/07/2019	LINX	HERCULES LEADER	63	EVE	107	N	G SHED EAVES, A BLOCK, C BLOCK AND D BLOCK	Y	Y		D BLOCK UTILISED AS NOT ENOUGH AVAILABLE SPACE IN A BLOCK AND C BLOCKS (1500 UNITS)	22/07/2019	2
34	25/07/2019	QUBE	TRANS FUTURE 6	114	EVE	106	N	A BLOCK, C BLOCK AND USED 1	Y	Y			22/07/2019	3
35	25/07/2019	QUBE	KOKOPO CHIEF	1911E	DAY	106	N	G SHED, J BLOCK AND L BLOCK	Y	Y			22/07/2019	4
36	26/07/2019	QUBE	PORT KYUSHI	1	DAY	103	Y	DIRECT TO TRUCK	Y	Y		VESSEL ETA 10/07/19 - DELAYED DUE TO JACOB OLDENDORFF STILL WORKING.	22/07/2019	3
37	28/07/2019	QUBE	TALISMAN	CF917	DAY	107	N	107CON, A BLOCK, CBLOCK, E SHED, LINKSPAN AND I BLOCK	Y	Y			25/07/2019	2
38	29/07/2019	QUBE	BALTIC HIGHWAY	167	EVE	106	N	D BLOCK, F BLOCK, H BLOCK, M BLOCK ANF P SHED	Y	Y			25/07/2019	2
39	30/07/2019	QUBE	INTEGRITY DAIDO	3	EVE	105	N	DIRECT TO TRUCK	Y	Y			24/07/2019	4
40	31/07/2019	QUBE	NIPPON HIGHWAY	153	DAY	107	N	C BLOCK	Y	Y			29/07/2019	2
41	31/07/2019	QUBE	BELUGA ACE	12	EVE	106	N	D BLOCK, F BLOCK, H BLOCK, M BLOCK AND P SHED	Y	Y			29/07/2019	2

SUMMARY	LINX	QUBE	COMMENT
TOTAL VESSELS FOR MONTH	9	32	
GREEN BERTH			
ORANGE BERTH			
RED BERTH			
GREEN LAYDOWN	7	25	
ORANGE LAYDOWN	2	7	
RED LAYDOWN	0	0	
NUMBER OF BERTHING DELAYS	0	5	
NUMBER OF MACHINERY ISSUES/REQUESTS NOT MET	0	0	

NUMBER	DATE	STEVE-DORE	VESSEL	VOYAGE	STARTING SHIFT	BERTH #	BERTH DELAY	LAYDOWN	MACHINERY REQUEST RECEIVED	MACHINERY REQUEST FILLED	MACHINERY ISSUES	NOTES	DATA ADMIN SUMMARY RECEIVED	NUMBER OF WORKING DAYS PRIOR TO VESSEL ARRIVAL THAT DATA ADMIN WAS RECEIVED
1	1/08/2019	QUBE	BOHEME	OC925	DAY	107	N	E SHED EAVES, G SHED EAVES, 107CON,A BLOCK, E SHED AND G SHED	Y	Y		A BLOCK UTILISED DUE TO BACK TO C BLOCK BEING FULL	29/07/2019	3
2	1/08/2019	QUBE	LAKE WANAKA	1914	EVE	106	N	D BLOCK, F BLOCK,I BLOCK, M BLOCK, G SHED AND P SHED	Y	Y		H BLOCK NOT UTILISED DUE TO BEING FILLED FROM PREVIOUS VESSEL	30/07/2019	2
3	2/08/2019	QUBE	FRONTIER ACE	161	DAY	107	N	A BLOCK, C BLOCK, B BLOCK AND D BLOCK	Y	Y		MOL VESSEL BERTHED INTO 107 DUE TO 105-106 BEING OCCUPIED. 4 AREAS UTILISED DUE TO VOLUME OF VESSEL (2200 UNITS)	30/07/2019	3
4	3/08/2019	LINX	GLOBAL LEADER	28	DAY	106	N	F BLOCK, J BLOCK, M BLOCK AND P SHED	Y	Y		H BLOCK NOT UTILISED DUE TO BEING FILLED FROM PREVIOUS VESSEL AND TRANSHIPMENTS/EXPORTS	31/07/2019	3
5	4/08/2019	LINX	PLEIADES SPIRIT	51	EVE	107	N	107CON, C BLOCK. ESHED AND GSHED	Y	Y			1/08/2019	2
6	4/08/2019	QUBE	KULTUS COVE	21	NIGHT	103	N	DIRECT TO TRUCK	Y	Y			1/08/2019	2
7	5/08/2019	QUBE	AEGEAN HIGHWAY	107	DAY	106	N	C BLOCK AND A BLOCK	Y	Y			31/07/2019	3
8	5/08/2019	QUBE	TIGER	FF932	DAY	107	N	A BLOCK, C BLOCK, I BLOCK AND E SHED	Y	Y			1/08/2019	2
9	6/08/2019	QUBE	GLORIOUS LEADER	OZ803	DAY	107	N	107CON,C BLOCK, A BLOCK, D BLOCK, ESHED, GSHED AND I BLOCK	Y	Y		3 AREAS UTILISED DUE TO VOLUME OF VESSEL (1600 UNITS)	2/08/2019	2
10	7/08/2019	QUBE	GLOVIS CARAVEL	24	EVE	106	N	F BLOCK, GSHED ANF M BLOCK	Y	Y		H BLOCK NOT UTILISED DUE TO BEING FULL OF TRANSHIPMENTS AND EXPORTS	5/08/2019	2
11	8/08/2019	QUBE	TRANS FUTURE 7	114	DAY	107	N	A BLOCK AND C BLOCK	Y	Y			5/08/2019	3
12	11/08/2019	QUBE	TONSBERG	FF931	EVE	107	Y	107CON,A BLOCK, C BLOCK, I BLOCK,E SHED AND G SHED	Y	Y		VESSEL DELAYED DUE TO RORO/PCC VESSELS BERTHING BEING SUSPENDED DUE TO INCLEMENT WEATHER	6/08/2019	4
13	11/08/2019	LINX	SELENE LEADER	30	EVE	106	Y	F BLOCK, H BLOCK AND M BLOCK	Y	Y		VESSEL DELAYED DUE TO RORO/PCC VESSELS BERTHING BEING SUSPENDED DUE TO INCLEMENT WEATHER	7/08/2019	3
14	12/08/2019	LINX	DONINGTON	12	DAY	107	Y	107CON, G SHED EAVES AND C BLOCK	Y	Y		VESSEL DELAYED DUE TO FLOW ON AFFECT FROM SUSPENSION OF PCC/RORO VESSELS	8/08/2019	2
15	12/08/2019	QUBE	DL JASMINE	719	DAY	105	N	DIRECT TO TRUCK	Y	Y			6/08/2019	4
16	13/08/2019	LINX	GALAXY LEADER	31	DAY	106	N	D BLOCK,I BLOCK, K BLOCK, M BLOCK AND P SHED	Y	Y		H AND F BLOCKS NOT UTILISED DUE TO BEING FULL OF TRANSHIPMENTS/ EXPORTS AND PREVIOUS VESSELS	8/08/2019	3
17	13/08/2019	QUBE	GLOVIS CHORUS	73	EVE	107	N	A BLOCK, C BLOCK, D BLOCK AND E SHED	Y	Y		MOL VESSEL BERTHED INTO 107 DUE TO SPACE AVAILABLE IN A,C AND B D BLOCK (VESSELS AT 106 AND 105)	8/08/2019	3
18	13/08/2019	QUBE	MELANESIAN CHIEF	1912E	NIGHT	106	N	G SHED	Y	Y			7/08/2019	5
19	14/08/2019	QUBE	ADRIATIC HIGHWAY	107	NIGHT	106	N	107CON, A BLOCK AND C BLOCK	Y	Y			12/08/2019	2
20	17/08/2019	QUBE	DIVINE ACE	56	DAY	107	N	107CON,F BLOCK AND H BLOCK	Y	Y		MOL VESSEL BERTHED INTO 107 STBD DUE TO 106 BEING OCCUPIED BY ANOTHER MOL VESSEL. QUICKER RUNB TO H AND F BLOCKS WHEN VESSEL IS STBD SIDE AT 107	14/08/2019	3
21	17/08/2019	QUBE	LAVENDER ACE	60	EVE	106	N	H BLOCK, F BLOCK AND M BLOCK	Y	Y			14/08/2019	3
22	18/08/2019	QUBE	OREGON HIGHWAY	103	EVE	107	N	107CON, A BLOCK, C BLOCK, E SHED AND G SHED	Y	Y			15/08/2019	2
23	18/08/2019	QUBE	SIBULK TRADITION	108	DAY	103	N	DIRECT TO TRUCK	Y	Y			13/08/2019	4
24	19/08/2019	QUBE	TIJUCA	OC928	DAY	106	N	D BLOCK, F BLOCK, I BLOCK, M BLOCK, 105STR AND G SHED	Y	Y		H BLOCK NOT UTILISED DUE TO BEING FULL OF TRANSHIPMENTS/ EXPORTS	15/08/2019	2
25	21/08/2019	LINX	HOEGH TRIDENT	180	DAY	106	N	107CON, G SHED EAVES, C BLOCK AND E SHED	Y	Y			19/08/2019	2
26	21/08/2019	QUBE	TRAVIATA	OF919	DAY	106	N	107CON, C BLOCK, E SHED , G SHED AND LINK SPAN	Y	Y			19/08/2019	3
27	22/08/2019	LINX	AAL SHANGHAI	907EN	DAY	105	N	GSHED AND L BLOCK	Y	Y		GSHED USED DUE TO NO AVAILABLE SPACE IN P SHED AND FULL OF EXPORT STEEL	19/08/2019	3
28	23/08/2019	QUBE	THERMOPYLAE	OC929	DAY	107	N	A BLOCK, C BLOCK AND G SHED	Y	Y			21/08/2019	2
29	23/08/2019	QUBE	TRANS FUTURE 5	118	DAY	106	N	F BLOCK AND H BLOCK	Y	Y			20/08/2019	3
30	24/08/2019	QUBE	ARCADIA HIGHWAY	201	EVE	106	Y	D BLOCK, F BLOCK, J BLOCK AND M BLOCK	Y	Y		H BLOCK NOT UTILISED DUE TO BEING FILLED FROM PREVIOUS VESSEL. VESSEL BERTHING DELAYED BY A SHIFT DUR TO BETH CONGESTION 23/08-24/08/19	21/08/2019	3
31	24/08/2019	QUBE	NOCC ATLANTIC	8	EVE	107	Y	107 CON, A BLOCK	Y	Y		C BLOCK NOT UTILISED DUE TO BEING FILLED FROM PREVIOUS VESSEL. VESSEL BERTHING DELAYED BY A SHIFT DUE TO BERTH CONGESTION 23/08-24/08/19	20/08/2019	4
32	25/08/2019	QUBE	BLUE RIDGE HIGHWAY	92	EVE	106	Y	D BLOCK, F BLOCK AND H BLOCK	Y	Y		VESSEL BERTHING DELAYED DUE TO FLOW ON AFFECT FROM BERTH CONGESTION 23/08-24/08/19	21/08/2019	3
33	25/08/2019	QUBE	LISSOS	1	EVE	103	Y	DIRECT TO TRUCK	Y	Y		VESSEL ETA 14/08/19 - DELAYED DUE TO SIBULK TRADITION STILL WORKING	19/08/2019	5

34	25/08/2019	QUBE	ORCA ACE	9	DAY	107	N	107CON, B BLOCK, C BLOCK, D BLOCK, E SHED AND G SHED	Y	Y	MOL VESSEL BERTHED INTO 107 DUE TO 106 BEING OCCUPIED. B AND D BLOCKS UTILISED DUE TO VOLUME OF VESSEL (1600 UNITS)	22/08/2019	2
35	30/08/2019	LINX	CASSIOPEIA LEADER	17	DAY	106	N	F BLOCK, H BLOCK, I BLOCK, K BLOCK, J BLOCK AND PSBED	Y	Y		27/08/2019	3
36	30/08/2019	LINX	TRANS LEADER	19	EVE	105	N	D BLOCK, F BLOCK, USED2, M BLOCK, PSBED AND N BLOCK	Y	Y	F AND D BLOCK UTILISED SUE TO CASSIOPEIA LEADER DISCHARGING FROM 106 IN H BLOCK	26/08/2019	4
37	30/08/2019	QUBE	TYSLA	FF935	EVE	107	N	GSHED EAVES, 107CON, A BLOCK, C BLOCK, USED1 AND GSHED	Y	Y		28/08/2019	2

	SUMMARY	LINX	QUBE	COMMENT
	TOTAL VESSELS FOR MONTH	8	29	
	GREEN BERTH			
	ORANGE BERTH			
	RED BERTH			
	GREEN LAYDOWN	5	19	
	ORANGE LAYDOWN	3	10	
	RED LAYDOWN	0	0	
	NUMBER OF BERTHING DELAYS	0	4	
	NUMBER OF MACHINERY ISSUES/REQUESTS NOT MET	0	0	



DATE	STEVE-DORE	VESSEL	VOYAGE	STARTING SHIFT	BERTH #	BERTH DELAY	LAYDOWN	MACHINERY REQUEST RECEIVED	MACHINERY REQUEST FILLED	MACHINERY ISSUES	NOTES	DATA ADMIN SUMMARY RECEIVED	NUMBER OF WORKING DAYS PRIOR TO VESSEL ARRIVAL THAT DATA ADMIN WAS RECEIVED
1/09/2019	QUBE	LAKE COMO	1916	EVE	106	N	D BLOCK,GSHED, USED 2, I BLOCK AND L BLOCK	Y	Y		GSHED UTILISED AS ONLY SHED SPACE AVAILABLE WAS IN G SHED	28/08/2019	3
2/09/2019	QUBE	TULANE	CF923	DAY	107	N	ESHED EAVES, G SHED EAVES,A BLOCK,C BLOCK, E SHED AND G SHED	Y	Y			29/08/2019	2
3/09/2019	QUBE	KOKOPO CHIEF	1913E	EVE	106	N	L BLOCK	Y	Y			2/09/2019	2
4/09/2019	QUBE	GRAND COSMO	101	EVE	107	N	ESHED EAVES, C BLOCK, USED1 AND E SHED	Y	Y		MOL VESSEL BERTHED INTO 107 DUE TO 105-106 BEING OCCUPIED	28/08/2019	3
4/09/2019	LINX	HOEGH LONDON	83	DAY	107	N	E SHED EAVES, 107CON,A BLOCK,C BLOCK,GSHED AND I BLOCK	Y	Y		LADY BEETLE FOUND ONBOARD - VESSEL REQUIERD FOGGING. BERTHED @2030HRS 04/09 (FOGGING COMMENCED AT 2100HRS). STEVEDORE COMMENCED DISCHARGE AT 1500HRS 05/09/19 - NIL VESSEL AFFECTED	29/08/2019	3
4/09/2019	QUBE	NIPPON HIGHWAY	154	DAY	105	N	F BLOCK AND H BLOCK	Y	Y			29/08/2019	3
5/09/2019	QUBE	AFRICAN STARLING	1	DAY	103	Y	DIRECT TO TRUCK	Y	Y		VESSEL ETA 28/08/19 - DELAYED DUE TO ILISSOS STILL WORKING	2/09/2019	3
5/09/2019	QUBE	TRANS FUTURE 6	115	DAY	105	N	D BLOCK, F BLOCK AND USED2	Y	Y		F AND D BLOCKS UTILISED AS H WAS FULL FROM NIPPON HIGHWAY DSICHARGE	3/09/2019	2
6/09/2019	LINX	HOEGH JACKSONVILLE	34	DAY	106	Y	H BLOCK, M BLOCK AND P SHED	Y	Y		VESSEL WAS BERTHING WAS DELAYED DUE TO LINX REQUESTING BERTH 106 SO AS SIDE RAMP COULD BE UTILISED. KOKOPO CHIEF WAS WORKING PRIOR.	2/09/2019	4
7/09/2019	QUBE	MARSGRACHT	1905	DAY	106	N	I BLOCK	Y	Y			3/09/2019	4
10/09/2019	QUBE	DON PASQUALE	CO930	DAY	106	N	GSHED,H BLOCK, K BLOCK, M BLOCK AND P SHED	Y	Y		STEVEDORES REQUESTED VESSEL BERTH INTO 106 ( NOT 107) DUE TO PREDICTED HIGH WINDS THAT MAY AFFECT BERTHING INTO 107	5/09/2019	3
10/09/2019	QUBE	TOSCANA	CO932	EVE	107	N	E SHED EAVES, G SHED EAVES, 107CON,LINK SPAN,A BLOCK,C BLOCK, GSHED AND LOT13	Y	Y			5/09/2019	3
12/09/2019	QUBE	BELUGA ACE	13	EVE	106	N	F BLOCK, H BLOCK, M BLOCK AND P SHED	Y	Y			10/09/2019	3
13/09/2019	LINX	GLOBAL LEADER	29	DAY	105	N	D BLOCK, F BLOCK, J BLOCK, K BLOCK, PSHED AND N BLOCK	Y	Y		F AND D BLOCK UTILISED DSUE TO BELUGA ACE DISCHARGING FROM 106 IN H BLOCK	9/09/2019	4
13/09/2019	LINX	SELENA LEADER	31	DAY	107	N	ESHED EAVES,A BLOCK, C BLOCK, USED1 AND GSHED	Y	Y			10/09/2019	3
14/09/2019	QUBE	BRASILIA HIGHWAY	120	EVE	107	N	E SHED EAVES, G SHED EAVES, 107CON,C BLOCK,D BLOCK, GSHED AND I BLOCK	Y	Y		D BLOCK UTILISED DUE CLOSER NOT ENOUGH SPACE IN A BLOCK FOR VOLUME (1800 UNITS)	12/09/2019	2
15/09/2019	LINX	HOEGH NEW YORK	117	DAY	106	N	GSHED,H BLOCK, L BLOCK, M BLOCK AND P SHED	Y	Y			11/09/2019	3
16/09/2019	QUBE	ONYX ACE	61	DAY	106	N	B BLOCK, D BLOCK, F BLOCK, H BLOCK, K BLOCK, J BLOCK, L BLOCK, M BLOCK AND M BLOCK	Y	Y			10/09/2019	4
16/09/2019	LINX	TRITON LEADER	71	DAY	107	N	B BLOCK, USED1, D BLOCK AND I BLOCK	Y	Y		C + A BLOCKS FULL DUE TO PREVIOUS VESSEL HIGH VOLUMES	11/09/2019	3
17/09/2019	QUBE	GRAND ORION	110	DAY	107	N	A BLOCK AND ESHED	Y	Y		MOL VESSEL BERTHED INTO 107 DUE TO INSUFFICIENT SPACE OPN OTHER SIDE OF TERMINAL. A BLOCK ONLY AVAILABLE SPACE	5/09/2019	8
18/09/2019	QUBE	ETERNAL ACE	68	EVE	106	N	F BLOCK,H BLOCK AND M BLOCK	Y	Y			13/09/2019	3
18/09/2019	QUBE	TAMESIS	CO933	EVE	107	N	E SHED EAVES, G SHED EAVES, 107CON, A BLOCK, B BLOCK, C BLOCK AND USED2	Y	Y		B BLOCK UTILISED AS NOT SUFFICIENT SPACE IN A AND C BLOCKS	16/09/2019	3
19/09/2019	QUBE	ADRIATIC HIGHWAY	108	DAY	107	N	B BLOCK AND D BLOCK	Y	Y		B AND D BLOCK UTILISED DUE A AND C BLOCKS BEING FULL FROM PREVIOUS DISCHARGE	13/09/2019	3
20/09/2019	QUBE	LAKE WANAKA	1917	DAY	106	N	D BLOCK,F BLOCK, H BLOCK, USED2, I BLOCK, K BLOCK, J BLOCK, L BLOCK,M BLOCK, P SHED AND BLOCK	Y	Y			16/09/2019	4
20/09/2019	QUBE	PORT OSAKA	1	NIGHT	103	Y	DIRECT TO TRUCK	Y	Y		VESSEL ETA 11/09/19 - DELAYED DUE TO AFRICAN STARLING STILL WORKING	16/09/2019	4
20/09/2019	QUBE	TRANS FUTURE 7	107	DAY	107	N	GSHED EAVES, A BLOCK AND C BLOCK	Y	Y			17/09/2019	3
21/09/2019	QUBE	AAL NEWCASTLE	908ES	EVE	106	N	GSHED AND I BLOCK	Y	Y			17/09/2019	4
24/09/2019	QUBE	CARMEN	CF922	DAY	107	N	ESHED EAVES, 107 CON, A BLOCK,C BLOCK, USED1, ESHED, LINKSPAN AND LOT 13	Y	Y			23/09/2019	1
24/09/2019	QUBE	TITANIA	CZ905	DAY	106	N	F BLOCK, H BLOCK, USED2, M BLOCK, PSHED AND N BLOCK	Y	Y			18/09/2019	4
25/09/2019	QUBE	SOUTHERN HIGHWAY	89	EVE	107	N	ESHED EAVES, GSHED EAVES, A BLOCK, C BLOCK, USED1 AND E SHED	Y	Y			18/09/2019	5
26/09/2019	QUBE	OREGON HIGHWAY	104	DAY	106	N	F BLOCK AND H BLOCK	Y	Y			23/09/2019	3
26/09/2019	QUBE	PARSIFAL	CF923	DAY	107		E SHED EAVES, 107CON,C BLOCK, USED1,D BLOCK AND E SHED	Y	Y		D BLOCK UTILISED DUE NOT ENOUGH SPACE AVAILABLE IN A BLOCK	25/09/2019	1
27/09/2019	QUBE	GLOVIS CARAVEL	25	EVE	107	N	GSHED EAVES, A BLOCK, B BLOCK, C BLOCK, USED1 AND ESHED	Y	Y		MOL VESSEL BERTHED INTO 107 DUE TO SPACE AVAILABLE IN A,C AND B BLOCK (QUICKER RUN TO B BLOCK THEN FROM BERTH 105)	25/09/2019	3
28/09/2019	QUBE	MELANESIAN CHIEF	1912W	DAY	106	N	GSHED AND L BLOCK	Y	Y			23/09/2019	5
30/09/2019	QUBE	FLORIDA HIGHWAY	101	EVE	107	N	F BLOCK,H BLOCK, I BLOCK AND 107CON	Y	Y		VESSEL CHANGED FROM BERTH 106 TO 105 DUE TO MELANESIAN DELAYED ALONGSIDE. THE VESSEL THEN BERTHED INTO 107 STBD DUE TO CONTAINER OPERATIONS AT 105	25/09/2019	3

SUMMARY	LINX	QUBE	COMMENT
TOTAL VESSELS FOR MONTH	6	29	
GREEN BERTH			
ORANGE BERTH			
RED BERTH			
GREEN LAYDOWN	4	23	
ORANGE LAYDOWN	2	6	
RED LAYDOWN	0	0	
NUMBER OF BERTHING DELAYS	1	2	
NUMBER OF MACHINERY ISSUES/REQUESTS NOT MET	0	0	

NUMBER	DATE	STEVE-DORE	VESSEL	VOYAGE	STARTING SHIFT	BERTH #	BERTH DELAY	LAYDOWN	MACHINERY REQUEST RECEIVED	MACHINERY REQUEST FILLED	MACHINERY ISSUES	NOTES	DATA ADMIN SUMMARY RECEIVED	NUMBER OF WORKING DAYS PRIOR TO VESSEL ARRIVAL THAT DATA ADMIN WAS RECEIVED
1	1/10/2019	QUBE	CORAL GEM	0919	EVE	103	N	DIRECT TO TRUCK	Y	Y			27/09/2019	3
2	1/10/2019	QUBE	SERENITY ACE	093	EVE	106	N	F BLOCK	Y	Y		H BLOCK NOT UTILISED AS FULL FROM PREVIOUS VESSEL	27/09/2019	3
3	2/10/2019	LINX	AURIGA LEADER	080	EVE	107	N	107CON, ESHED & GSHED EAVES, A BLOCK, C BLOCK, USED1, G SHED, I BLOCK AND LOT13	Y	Y			30/09/2019	3
4	3/10/2019	QUBE	TRANS FUTURE 5	119	EVE	106	N	F BLOCK, H BLOCK AND K BLOCK	Y	Y			27/09/2019	5
5	3/10/2019	LINX	DIGNITY ACE	15	NIGHT	107	N	107CON, ESHED & GSHED EAVES, C BLOCK, USED1, E SHED AND F BLOCK	Y	Y			1/10/2019	2
6	3/10/2019	LINX	CASSIOPEIA LEADER	018	EVE	105	N	D BLOCK, F BLOCK, P SHED AND N BLOCK	Y	Y		H BLOCK NOT UTILISED AS FULL OF TRANSHIPMENTS & EXPORTS	2/10/2019	1
7	5/10/2019	QUBE	DON CARLOS	C0934	NIGHT	107	N	107CON, E SHED EAVES, A BLOCK, B BLOCK, USED1, E SHED, AND I BLOCK	Y	Y		C BLOCK NOT UTILISED AS FULL FROM PREVIOUS VESSEL	2/10/2019	3
8	8/10/2019	QUBE	DIVINE ACE	057	DAY	106	N	F BLOCK, H BLOCK, I BLOCK, J BLOCK, K BLOCK, L BLOCK, M BLOCK AND N BLOCK	Y	Y		MULTIPLE LAY DOWN AREAS USED DUE TO VESSEL HAVING A VOLUME OF 2100 UNITS	2/10/2019	3
9	8/10/2019	QUBE	MORNING PEACE	C0936	EVE	107	N	E SHED AND G SHED EAVES, A BLOCK, B BLOCK, C BLOCK, D BLOCK AND E SHED	Y	Y		MULTIPLE LAY DOWN AREAS USED LIMITED SPACE IN A AND C BLOCKS (DUE TO VOLUMES FROM PREVIOUS VESSELS AND LONG WEEKEND)	3/10/2019	2
10	10/10/2019	QUBE	FREMANTLE HIGHWAY	048	EVE	106	N	D BLOCK, F BLOCK AND H BLOCK	Y	Y			4/10/2019	3
11	11/10/2019	QUBE	TARAGO	CF925	DAY	107	N	107CON, ESHED & GSHED EAVES, C BLOCK, USED1 AND E SHED	Y	Y			8/10/2019	3
12	11/10/2019	LINX	KARIYUSHI LEADER	10	EVE	105	N	D BLOCK, F BLOCK, P SHED AND N BLOCK	Y	Y		H BLOCK NOT UTILISED AS FULL OF TRANSHIPMENTS & EXPORTS	09/10/19	2
13	11/10/2019	QUBE	KOKOPO CHIEF	1913W	NIGHT	106	N	G SHED AND L BLOCK	Y	Y			3/10/2019	5
14	12/10/2019	QUBE	LA LUNA	01	NIGHT	103	Y	BERTHING DELAYED DUE TO CORAL GEM STILL ALONGSIDE WORKING	Y	Y			3/10/2019	5
15	14/10/2019	QUBE	GRAVITY HIGHWAY	041	NIGHT	107	N	E SHED AND G SHED EAVES, A BLOCK, C BLOCK AND I BLOCK	Y	Y			10/10/2019	2
16	14/10/2019	QUBE	ORCA ACE	010	EVE	106	N	B BLOCK, D BLOCK, USED2, J BLOCK, L BLOCK, PSHED AND N BLOCK	Y	Y		B AND D BLOCK USED AS NO SPACE IN H AND F BLOCKS (DUE TO VOLUMES FROM PREVIOUS VESSELS AND VESSEL HAVING 1600 UNITS)	10/10/2019	1
17	15/10/2019	LINX	HOEH TRANSPORTER	145	EVE	106	N	F BLOCK, H BLOCK, USED2, I BLOCK, K BLOCK AND P SHED	Y	Y			10/10/2019	3
18	18/10/2019	QUBE	SPLENDID ACE	125	EVE	106	N	H BLOCK	Y	Y			15/10/2019	2
19	18/10/2019	LINX	GOLIATH LEADER	086	DAY	107	N	107CON, C BLOCK AND E SHED	Y	Y			16/10/2019	2
20	19/10/2019	QUBE	TRANS FUTURE 6	116	EVE	106	N	F BLOCK, H BLOCK AND USED2	Y	Y			15/10/2019	4
21	20/10/2019	QUBE	TITUS	C0937	DAY	107	N	G SHED EAVES, A BLOCK, C BLOCK, E SHED AND I BLOCK	Y	Y			17/10/2019	2
22	21/10/2019	QUBE	SWIFT ACE	095	DAY	106	N	D BLOCK, USED2, L BLOCK AND P SHED	Y	Y		H BLOCK NOT UTILISED AS FULL FROM PREVIOUS VESSEL	17/10/2019	3
23	23/10/2019	QUBE	ADRIATIC HIGHWAY	109	EVE	107	N	107CON, A BLOCK, C BLOCK AND E SHED	Y	Y			17/10/2019	4
24	24/10/2019	QUBE	STAR KILMANJARO	0719	DAY	106	N	K BLOCK	Y	Y			16/10/2019	6
25	25/10/2019	QUBE	ONYX ARROW	095	DAY	107	N	107CON, E SHED EAVES, USED1, D BLOCK, ESHED AND F BLOCK	Y	Y		A AND C BLOCKS NOT UTILISED AS FULL FROM PREVIOUS VESSEL WITH LARGE VOLUMES	18/10/2019	5
26	26/10/2019	QUBE	MIRACULOUS ACE	090	DAY	107	N	COFL, B BLOCK AND D BLOCK	Y	Y		MOL VESSEL BERTHED INTO 107 DUE TO SPACE AVAILABLE IN B AND D BLOCK (VESSELS AT 106 AND 105) - QUICKER RUN TO B AND D BLOCK FROM 107	16/10/2019	8
27	26/10/2019	QUBE	BELUGA ACE	014	EVE	106	N	F BLOCK, H BLOCK, M BLOCK AND PSHED	Y	Y			24/10/2019	2
28	27/10/2019	QUBE	VOGE EMMA	201910	DAY	105	N	DIRECT TO TRUCK	Y	Y			25/10/2019	1
29	27/10/2019	QUBE	TIRRANNA	C0938	DAY	107	N	107CON, ESHED EAVES, A BLOCK, C BLOCK, E SHED, G SHED AND LOT13	Y	Y			23/10/2019	3
30	28/10/2019	QUBE	SALOME	CF926	DAY	107	N	107CON, GSHED EAVES, LINK SPAN, C BLOCK AND G SHED	Y	Y			24/10/2019	2
31	28/10/2019	LINX	TRITON LEADER	072	DAY	106	N	B BLOCK, D BLOCK, F BLOCK, H BLOCK, L BLOCK, M BLOCK AND P SHED	Y	Y		H BLOCK NOT UTILISED AS FULL OF TRANSHIPMENTS & EXPORTS	22/10/2019	4
32	29/10/2019	QUBE	MELANESIAN CHIEF	1914W	DAY	105	N	N BLOCK	Y	Y			24/10/2019	3
33	29/10/2019	LINX	AAL HONG KONG	909ES	EVE	106	Y	G SHED & I BLOCK	Y	Y		VESSEL DELAYED BY A SHIFT DUE TO MELANESIAN CHIEF ALONGSIDE AND REQUIREMENT FOR 2 PCC BERTHS. VESSEL OPS DELAYED DUE TO SHIPS CRANE BREAKDOWNS	25/10/2019	3
34	30/10/2019	QUBE	GRAND ORION	111	EVE	107	N	107CON, E SHED EAVES, C BLOCK AND USED2	Y	Y		MOL VESSEL BERTHED INTO 107 DUE TO VESSELS AT 106 AND 105.	23/10/2019	5
35	30/10/2019	QUBE	OREGON HIGHWAY	105	EVE	105	Y	D BLOCK, F BLOCK, H BLOCK, M BLOCK AND P SHED	Y	Y		BERTHING DELAYED BY 2HRS DUE TO DELAY WITH MELANESIAN CHIEF SAILING TIME	28/10/2019	2

SUMMARY	LINX	QUBE	COMMENT
TOTAL VESSELS FOR MONTH	7	28	
GREEN BERTH			
ORANGE BERTH			
RED BERTH			
GREEN LAYDOWN	4	22	
ORANGE LAYDOWN	3	6	
RED LAYDOWN	0	0	
NUMBER OF BERTHING DELAYS	0	3	
NUMBER OF MACHINERY ISSUES/REQUESTS NOT MET	0	0	

STEVE-DORE	VESSEL	VOYAGE	STARTING SHIFT	BERTH #	BERTH DELAY	LAYDOWN	MACHINERY REQUEST RECEIVED	MACHINERY REQUEST FILLED	MACHINERY ISSUES	NOTES	DATA ADMIN SUMMARY RECEIVED	NUMBER OF WORKING DAYS PRIOR TO VESSEL ARRIVAL THAT DATA ADMIN WAS RECEIVED
QUBE	CARIBBEAN HIGHWAY	176	DAY	107	N	E SHED EAVES,A BLOCK,C BLOCK,USED1 & E SHED	Y	Y			24/10/2019	6
QUBE	TRANS FUTURE 7	116	DAY	107	N	G SHED EAVES,A BLOCK & C BLOCK	Y	Y			28/10/2019	5
QUBE	LAKE WANAKA	1920	EVE	106	N	F BLOCK, H BLOCK, L BLOCK, M BLOCK AND P SHED	Y	Y			29/10/2019	4
QUBE	OBERON	CF927	DAY	107	N	107CON, E & G SHED EAVES,A BLOCK,B BLOCK, USED1, E SHED AND G SHED	Y	Y		B BLOCK UTILISED AS C BLOCK FULL AND D BLOCK WAS REQUIRED FOR INCOMING VESSELS AT BERTH 106. VESSEL OPERATIONS WENT 2HRS OVER ORIGINAL WORKING TIME AND PILOT OUT WAS NOT AVAILABLE UNTIL 4HRS AFTER COMPLETION. THIS DELAYED THE HOEGH TRACER - SHE WAS ONLY ABLE TO BERTH AT 107 DUE TO 106 BEING OCCUPIED AND BEING UNABLE TO BERTH AT 105 DUE TO BEING A HERO TYPE VESSEL	1/11/2019	2
QUBE	ONYX ACE	063	DAY	106	N	D BLOCK,F BLOCK AND H BLOCK	Y	Y			30/10/2019	5
LINX	HOEGH TRACER	22	EVE	107	Y	E SHED & G SHED EAVES,A BLOCK, C BLOCK, E SHED AND I BLOCK	Y	Y		VESSEL DELAYED BY 5.5HRS DUE TO ABOVE ISSUES WITH OBERON	31/10/2019	4
LINX	HOEGH ASIA	147	EVE	106	N	E SHED,K BLOCK, J BLOCK, L BLOCK, M BLOCK AND P SHED	Y	Y			4/11/2019	3
LINX	ANTARES LEADER	064	DAY	106	N	D BLOCK,F BLOCK, H BLOCK AND P SHED	Y	Y			4/11/2019	4
LINX	VENUS LEADER	014	DAY	107	N	107CON, E & G SHED EAVES,A BLOCK,C BLOCK, USED1 AND G SHED	Y	Y			6/11/2019	3
QUBE	SOLAR AFRICA	60	EVE	103	N	DIRECT TO TRUCK	Y	Y			6/11/2019	3
QUBE	OCEAN HIGHWAY	173	NIGHT	106	N	F BLOCK, H BLOCK, I BLOCK, M BLOCK AND P SHED	Y	Y			7/11/2019	2
QUBE	FREMANTLE HIGHWAY	049	DAY	106	N	D BLOCK,F BLOCK AND H BLOCK	Y	Y			11/11/2019	2
QUBE	TAMERLANE	CF928	EVE	107	N	107CON, G SHED EAVES,C BLOCK, E SHED AND I BLOCK	Y	Y			7/11/2019	4
QUBE	MORNING CHANT	CO941	DAY	106	N	D BLOCK,E SHED, F BLOCK, K BLOCK,L BLOCK,M BLOCK AND P SHED	Y	Y		H BLOCK NOT UTILISED AS FULL OF TRANSHIPMENTS	7/11/2019	5
QUBE	TRANS FUTURE 5	120	EVE	105	N	B BLOCK, D BLOCK AND USED2	Y	Y		B BLOCK UTILISED DUE TO ONE AREA AVAIABLE FOR THE TOYOTA SCANNING	11/11/2019	3
QUBE	KOKOPO CHIEF	1915W	DAY	106	N	M BLOCK AND P SHED	Y	Y			13/11/2019	2
QUBE	CARRERA	1921	EVE	105	N	F BLOCK,H BLOCK, I BLOCK,M BLOCK AND P SHED	Y	Y			14/11/2019	2
QUBE	MARGUERITE ACE	088	EVE	106	N	F BLOCK AND USED 2	Y	Y		H BLOCK NOT UTILISED AS FULL OF TRANSHIPMENTS	14/11/2019	3
QUBE	WALRUS ACE	008	DAY	107	Y	D BLOCK,F BLOCK,H BLOCK AND M BLOCK	Y	Y		VESSEL STAYED ALONGSIDE FOR 3 - ORIGINALLY AT BERTH 107 ON 20/11/19. DoA DID NOT ALLOW RAMP TO BE LOWERED. INSPECTION WAS CONDUCTED @ 0530HRS 20/11/19. VESSEL WAS ADVISED TO VACATE BERTH(DEPARTED 1544HRS 23/11/19).THE VESSEL WAS TREATED OFFSHORE TWICE AND RE-BERTHED 0535HRS 25/11/19 INTO BERTH 105. NO DELAYS TO INCOMING VESSELS. DISCHARGED UNTIL PM 27/11/19 DUE TO DoA CONTROLLED DISCHARGE.	13/11/2019	5
QUBE	SANTA INES	1	EVE	103	Y	DIRECT TO TRUCK	Y	Y		VESSEL DELAYED DUE TO SOLAR AFRICA STILL WORKING	13/11/2019	5
LINX	GOLIATH LEADER	087	EVE	106	N	F BLOCK,H BLOCK,M BLOCK AND P SHED	Y	Y			21/11/2019	2
QUBE	TUGELA	CO942	DAY	107	N	107CON, E & G SHED EAVES,C BLOCK,USED AND G SHED	Y	Y			22/11/2019	2
QUBE	HYPERION HIGHWAY	031	DAY	106	N	D BLOCK,F BLOCK, K BLOCK,M BLOCK, AND P SHED	Y	Y		H BLOCK NOT UTILISED AS FULL OF FROM PREVIOUS VESSEL	20/11/2019	3
LINX	POSITIVE LEADER	075	EVE	107	N	G SHED EAVES,A BLOCK,C BLOCK AND LINKSPAN	Y	Y			19/11/2019	4
QUBE	ADRIATICE HIGHWAY	110	EVE	106	N	F BLOCK,H BLOCK AND M BLOCK	Y	Y			22/11/2019	2
QUBE	MINERVAGRACHT	1909	EVE	106	N	L BLOCK AND PIPES DIRECT TO TRUCK	Y	Y			25/11/2019	2
LINX	JUPITER LEADER	030	DAY	107	N	E & G SHED EAVES, 107CON, A BLOCK, C BLOCK AND LINK SPAN	Y	Y		VESSEL TOOK 48HRS TO DISCHARGE DUE TO DoA CONTROLLED DISCHARGE ONLY DAY LIGHT HOURS	25/11/2019	3
QUBE	MORNING MARGARETA	002	DAY	105	N	F BLOCK,USED 2, K BLOCK, M BLOCK AND P SHED	Y	Y		H BLOCK NOT UTILISED AS FULL OF TRANSHIPMENTS & EXPORTS	21//11/19	8
QUBE	TRANS FUTURE 6	117	DAY	107	N	A BLOCK AND C BLOCK	Y	Y			25/11/2019	5

SUMMARY	LINX	QUBE	COMMENT
TOTAL VESSELS FOR MONTH	7	22	
GREEN BERTH			
ORANGE BERTH			
RED BERTH			
GREEN LAYDOWN	7	16	
ORANGE LAYDOWN	0	6	

<i>RED LAYDOWN</i>	0	0
<i>NUMBER OF BERTHING DELAYS</i>	1	2
<b>NUMBER OF MACHINERY ISSUES/REQUESTS NOT MET</b>	0	0

DATE	STEVE-DORE	VESSEL	VOYAGE	STARTING SHIFT	BERTH #	BERTH DELAY	LAYDOWN	MACHINERY REQUEST RECEIVED	MACHINERY REQUEST FILLED	MACHINERY ISSUES	NOTES	DATA ADMIN SUMMARY RECEIVED	NUMBER OF WORKING DAYS PRIOR TO VESSEL ARRIVAL THAT DATA ADMIN WAS RECEIVED
2/12/2019	QUBE	TOKYO CAR	1922	EVE	105	N	D BLOCK, F BLOCK, H BLOCK, M BLOCK AND N BLOCK	Y	Y			28/11/2019	4
3/12/2019	QUBE	GLORIOUS SAIKI	0015	NIGHT	106	N	P SHED	Y	Y			29/11/2019	3
4/12/2019	QUBE	CARIBBEAN HIGHWAY	177	EVE	107	N	A BLOCK AND C BLOCK	Y	Y			2/12/2019	2
4/12/2019	QUBE	MELANESIAN CHIEF	1916W	DAY	106	N	G SHED	Y	Y			2/12/2019	2
5/12/2019	LINX	NEPTUNE LEADER	093	DAY	107	N	107CON, E & G SHED EAVES, A BLOCK, COFL AND G SHED	Y	Y		C BLOCK NOT UTILISED AS FULL FROM CARIBBEAN HIGHWAY UNITS	2/12/2019	3
7/12/2019	LINX	PLEIADES SPIRIT	53	DAY	105	N	D BLOCK, USED2, M BLOCK, P SHED AND N BLOCK	Y	Y		H BLOCK NOT UTILISED AS VESSEL AT 106 WAS BEING DISCHARGED INTO H BLOCK	4/12/2019	3
7/12/2019	LINX	HOEGH AFRICA	115	DAY	106	N	F BLOCK, H BLOCK, K BLOCK, L BLOCK AND P SHED	Y	Y			4/12/2019	3
7/12/2019	QUBE	TONSBERG	CF929	DAY	107	N	107CON, E & G SHED EAVES, A BLOCK, C BLOCK, USED1, G SHED AND I BLOCK	Y	Y			28/11/2019	7
8/12/2019	LINX	HOEGH AMERICA	115	EVE	106	N	D BLOCK, E SHED, I BLOCK, K BLOCK, AND P SHED	Y	Y		H BLOCK NOT UTILISED AS FULL FROM PREVIOUS VESSELS	8/12/2019	2
10/12/2019	QUBE	TIGER	CF930	EVE	107	N	E & G SHED EAVES, A BLOCK, C BLOCK, G SHED AND I BLOCK	Y	Y			5/12/2019	3
11/12/2019	QUBE	COURAGEOUS ACE	131	EVE	106	N	F BLOCK AND M BLOCK	Y	Y		H BLOCK NOT UTILISED AS FULL FROM PREVIOUS VESSELS	6/12/2019	3
12/12/2019	QUBE	MORNING CAMILLA	CO943	DAY	107	N	107CON, E & G SHED EAVES, A BLOCK, C BLOCK, E SHED, G SHED, LOT13 AND I BLOCK	Y	Y			9/12/2019	3
12/12/2019	LINX	GENTLE LEADER	080	DAY	106	N	D BLOCK, F BLOCK, H BLOCK, M BLOCK AND P SHED	Y	Y			5/12/2019	5
13/12/2019	LINX	ANTARES LEADER	065	EVE	107	N	107CON, A BLOCK, B BLOCK, C BLOCK, G SHED AND I BLOCK	Y	Y		B BLOCK UTILISED AS NOT ENOUGH AVAILABLE SPACE IN C AND A BLOCKS.	11/12/2019	2
14/12/2019	QUBE	TRANS FUTURE 7	117	DAY	106	N	F BLOCK, H BLOCK AND N BLOCK	Y	Y			9/12/2019	5
14/12/2019	QUBE	TALISMAN	CF931	EVE	107	N	C BLOCK, D BLOCK, G SHED AND I BLOCK	Y	Y		D BLOCK UTILISED AS NOT ENOUGH AVAILABLE SPACE IN A BLOCK.	10/12/2019	3
16/12/2019	QUBE	PORT TOKYO	01	DAY	103	N	DIRECT TO TRUCK	Y	Y			10/12/2019	4
16/12/2019	QUBE	RUBY ACE	075	EVE	106	N	F BLOCK	Y	Y		H BLOCK NOT UTILISED AS FULL OF TRANSHIPMENTS AND EXPORTS	13/12/2019	3
17/12/2019	QUBE	NORTHERN HIGHWAY	104	DAY	106	N	D BLOCK, F BLOCK, H BLOCK, K BLOCK, M BLOCK AND P SHED	Y	Y			12/12/2019	3
17/12/2019	QUBE	TRANQUIL ACE	078	EVE	107	N	A BLOCK, B BLOCK, C BLOCK AND G SHED	Y	Y		B BLOCK UTILISED AS NOT ENOUGH AVAILABLE SPACE IN C AND A BLOCKS DUE TO VOLUME OF 2000 UNITS. MOL VESSEL BERTHED AT 107 DUE TO VESSEL AT BERTH 106 AND MORE SPACE AVAILABLE FROM 107.	4/12/2019	12
19/12/2019	QUBE	GLOVIS CHORUS	075	DAY	107	N	G SHED EAVES, A BLOCK, C BLOCK, G SHED AND I BLOCK	Y	Y		VESSEL OPS WERE DELAYED BY 14HRS DUE TO VESSEL HAVING TO BE FOGGED WHILST ALONGSIDE - PRIOR TO OPS COMMENCING.	17/12/2019	2
20/12/2019	QUBE	OCEAN HIGHWAY	174	NIGHT	106	N	F BLOCK, H BLOCK AND M BLOCK	Y	Y			16/12/2019	4
22/12/2019	QUBE	HWAIIAN HIGHWAY	034	NIGHT	107	N	107CON, A BLOCK AND B BLOCK	Y	Y		B BLOCK UTILISED DUE TO C BLOCK BEING FULL AFTER DISCHARGE OF THE TRANQUIL ACE (2000 UNITS)	19/12/2019	2
23/12/2019	QUBE	BELUGA ACE	015	NIGHT	106	N	F BLOCK, H BLOCK, K BLOCK, M BLOCK AND P SHED	Y	Y			20/12/2019	1
26/12/2019	LINX	GOLIATH LEADER	088	NIGHT	107	N	107CON, A BLOCK AND C BLOCK	Y	Y			23/12/2019	2
28/12/2019	QUBE	TJUJCA	CF932	DAY	107	N	107CON, E & G SHED EAVES, A BLOCK, C BLOCK, G SHED AND I BLOCK	Y	Y			24/12/2019	2
29/12/2019	QUBE	TRANS FUTURE 5	121	EVE	105	N	D BLOCK, F BLOCK AND H BLOCK	Y	Y			18/12/2019	5
29/12/2019	LINX	MERLIN ARROW	908	DAY	106	N	DIRECT TO SHIP	Y	Y		EXPORT COPPER CONCENTRATE	N/A	N/A
30/12/2019	QUBE	MIGNON	CO946	EVE	107	N	B BLOCK, D BLOCK, E SHED, G SHED AND I BLOCK	Y	Y		B AND D BLOCK UTILISED AS C AND A BLOCK FULL FROM PREVIOUS VESSELS AND NO MOVEMENTS OVER CHRISTMAS/NEW YEAR PERIOD	27/12/2019	1
31/12/2019	QUBE	ADRIATIC HIGHWAY	111	DAY	106	Y	H BLOCK, L BLOCK AND N BLOCK	Y	Y		VESSEL DELAYED DUE TO MERLIN ARROW STILL WORKING	24/12/2019	3

SUMMARY	LINX	QUBE	COMMENT
TOTAL VESSELS FOR MONTH	8	22	
GREEN BERTH			
ORANGE BERTH			
RED BERTH			
GREEN LAYDOWN	5	19	
ORANGE LAYDOWN	3	3	
RED LAYDOWN	0	0	
NUMBER OF BERTHING DELAYS	0	1	
NUMBER OF MACHINERY ISSUES/REQUESTS NOT MET	0	0	

NUMBER	DATE	STEVE-DORE	VESSEL	VOYAGE	STARTING SHIFT	BERTH #	BERTH DELAY	LAYDOWN	MACHINERY REQUEST RECEIVED	MACHINERY REQUEST FILLED	MACHINERY ISSUES	NOTES
1	0200/1	QP	CARRERA	1912	DAY	2	NIL	M	YES	YES	NIL	
2	0400/1	LINX	VENUS LEADER	11	EVE	1	NIL	D	YES	YES	NIL	
3	2300/1	LINX	SELENE LEADER	29	DAY	2	NIL	A & C	YES	YES	NIL	
4	0001/2	QP	MINERVAGRACHT	1905	DAY	1	NIL	UHOOK	YES	YES	NIL	27m RAIL (Aurizon) & 2 X YACHTS; warped to berth 2 at 1600/4th after rail completed to do yachts in daylight. Berth was required by PBPL for Navy.
5	1400/2	LINX	HOEGH JEDDAH	32	NIGHT	3	NIL	M	YES	YES	NIL	
6	1630/2	LINX	THUNDER BIRD	120701	DAY	2	NIL	UHOOK	YES	YES	NIL	Rail Wagons
7	2359/2	QP	FIGARO	CF915/FF928	DAY	3	NIL	E	YES	YES	NIL	
8	0600/3	LINX	SONJA	98BA	DAY	3	NIL	B	YES	YES	NIL	Awaiting departure of Thunderbird. Linx labour issue.
9	0400/5	LINX	HOEGH TRAPPER	17	EVE	3	NIL	M	YES	YES	NIL	
10	0700/5	LINX	LEANNE AUERBACH	1244004	EVE	3	24HRS	UHOOK	YES	YES	NIL	Berth congestion 6-12 July 2019 (due to navy at berth 1, number of vessels expected and severe weather event – wind and swell that closed pilot boarding ground. Leanne Auerbach (Geodis) delayed 24hrs awaiting Hoegh Trapper (HOEGH) to depart. Vessel would have been 16hr delay however elected to start 8hrs later due to pilotage suspension. intermittently from 4/7 to 7/7/19)
11	1300/5	QP	OREGON HIGHWAY	102	EVE	2	NIL	A	YES	YES	NIL	
12	0400/6	QP	RHL AURORA	1917S/1921N	DAY	2	48HRS	B & OLD D	YES	YES	NIL	Berth congestion 6-12 July 2019 (due to navy at berth 1, number of vessels expected and severe weather event – wind and swell that closed pilot boarding ground. RHL Aurora (Swire) delayed 48hrs awaiting Oregon Hwy (KLI) to depart. Vessel would have been 24hrs delay however elected to not book labour all weekend due to pilotage suspension and start 24hrs after earliest possible berthing intermittently from 4/7 to 7/7/19)
13	0800/7	QP	GREBE ARROW	0319	DAY	3	NIL	NS	YES	YES	NIL	
14	1830/7	QP	ADRIATIC HIGHWAY	106	EVE	2	48HRS	A & C	YES	YES	NIL	Berth congestion 6-12 July 2019 (due to navy at berth 1, number of vessels expected and severe weather event – wind and swell that closed pilot boarding ground intermittently from 4/7 to 7/7/19). Adriatic Hwy delayed 48hrs awaiting RHL Aurora (Swire) to depart. Could have been a 32hr delay if RHL Aurora had booked labour on weekend.
15	0300/8	QP	SOFRANA SURVILLE	253N	EVE	3	24HRS	B	YES	YES	NIL	Berth congestion 6-12 July 2019 (due to navy at berth 1, number of vessels expected and severe weather event – wind and swell that closed pilot boarding ground. intermittently from 4/7 to 7/7/19). Sofrana Surville (Sofrana) delayed 24hrs awaiting Helvetia (Asiaworld) to depart. Could have berthed 8hrs earlier if not for the pilotage suspension.
16	1300/8	LINX	CENTAURUS LEADER	14	DAY	2	32HRS	D	YES	YES	NIL	Berth congestion 6-12 July 2019 (due to navy at berth 1, number of vessels expected and severe weather event – wind and swell that closed pilot boarding ground intermittently from 4/7 to 7/7/19). Centaurus Leader (NYK) delayed 32hrs awaiting Adriatic Hwy (Kline) to depart.
17	0700/9	LINX	TRANS FUTURE 5	117	DAY	2	32HRS	A	YES	YES	NIL	Berth congestion 6-12 July 2019 (due to navy at berth 1, number of vessels expected and severe weather event – wind and swell that closed pilot boarding ground intermittently from 4/7 to 7/7/19). Trans Future 5 (TFS) delayed 32hrs awaiting Navy to depart.; SPI ON ARRIVAL; clearance received 0930hrs labour was booked from 0600hrs
18	0600/9	QP	HELVETIA	5029	DAY	3	NIL	UHOOK	YES	YES	NIL	1 x CGWF Project Blade

19	0800/10	QP	SOFRANA TOURVILLE	230S	NIGHT	3	32HRS	J & B	YES	YES	NIL	Sofrana Tourville (Southbound vessel) called AAT 11/7/19 due to delays expected at DPW (predominately related to industrial action at DPW). Berth congestion 6-12 July 2019 (due to navy at berth 1, number of vessels expected and severe weather event – wind and swell that closed pilot boarding ground intermittently from 4/7 to 7/7/19). Sofrana Tourville (Sofrana) delayed 32hrs awaiting Sofrana Surville to depart
20	0100/11	LINX	HOEGH ASIA	145	DAY	2	NIL	C	YES	YES	NIL	
21	0200/11	QP	TAMERLANE	CF916	DAY	3	24HRS	A & C	YES	YES	NIL	Berth congestion 6-12 July 2019 (due to navy at berth 1, number of vessels expected and severe weather event – wind and swell that closed pilot boarding ground intermittently from 4/7 to 7/7/19). Tamerlane (WWL) delayed 24hrs awaiting Sofrana Tourville (Sofrana) to depart.
22	0400/11	QP	ARCADIA HIGHWAY	200	NIGHT	2	12HRS	A	YES	YES	NIL	Berth congestion 6-12 July 2019 (due to navy at berth 1, number of vessels expected and severe weather event – wind and swell that closed pilot boarding ground intermittently from 4/7 to 7/7/19). Arcadia Hwy (Kline) delayed 12hrs awaiting Hoegh Asia (Hoegh) to depart
23	0600/11	QP	MORNING LENA	CO922	DAY	1	24HRS	D & M	YES	YES	NIL	Berth congestion 6-12 July 2019 (due to navy at berth 1, number of vessels expected and severe weather event – wind and swell that closed pilot boarding ground intermittently from 4/7 to 7/7/19). Morning Lena (WWL) delayed 24hrs awaiting TF5 (TFS) to depart)
24	1600/12	QP	ORCA ACE*	8	DAY	1	NIL	M	YES	YES	NIL	Orca Ace (MOL) chose to wait outside pilot boarding ground area (off Rainbow Beach) since 9/7/19 for the congestion to clear and to be able to get a layup berth on Sat 13th July. Vessel was instructed for fogging upon arrival. Vessel failed fogging and refused to vacate berth which delayed Hoegh Africa which was unable to berth on arrival.
25	0100/13	QP	NOBLE ACE	72	DAY	2	NIL	A	YES	YES	NIL	
26	2000/13	QP	AAL HONG KONG	906ES	DAY	3	NIL	NS	YES	YES	NIL	
27	0700/14	LINX	HOEGH AFRICA	113	DAY	2	16HRS	A & C	YES	YES	NIL	Hoegh Africa (Hoegh) delayed 16hrs awaiting Orca Ace (MOL) from Berth 1 and AAL Hong Kong (AAL) from Berth 3 to depart
28	0200/15	QP	LAKE TAUPO	1913	DAY	1	NIL	C	YES	YES	NIL	
29	0200/15	QP	VIKING OCEAN	1956	NIGHT	1	16HRS	A & C	YES	YES	NIL	Viking Ocean (Armacup) delayed 16hrs awaiting Lake Taupo (Armacup) to depart (vessel was planned for berthing on arrival however Hoegh Africa then took berth because Orca Ace did not vacate)
30	0200/15	LINX	FILIA ARIEA	36	DAY	3	NIL	H	YES	YES	NIL	
31	2030/15	QP	BLUE RIDGE HIGHWAY	91	DAY	1	NIL	C	YES	YES	NIL	
32	0100/17	QP	FORUM SAMOA 4	014S/015N	DAY	2	NIL	B	YES	YES	NIL	
33	1000/15*	QP	KWANGTUNG	1911N	EVE	2	NIL	B	YES	YES	NIL	ESEA; vessel awaiting FSM to work as loading T/s ex FSM. FSM delayed in Sydney 2days; Kwangtung delayed 72hrs awaiting Forum Samoa 4 to work. Vessel needed to load transshipments so elected to wait for Forum Samoa 4 which had been delayed in Sydney (following the significant weather / strong winds along the coast line
34	0800/17	QP	WALRUS ACE	6	EVE	1	NIL	A & C	YES	YES	NIL	
35	0400/20	QP	PALMELA	167	DAY	1	NIL	D & M	YES	YES	NIL	
36	0730/20	LINX	VIRGO LEADER	24	EVE	2	NIL	M	YES	YES	NIL	
37	0800/20	QP	GRAND COSMO	100	NIGHT	1	8HRS	A	YES	YES	NIL	Awaiting departure of Palmela
38	1800/20	LINX	PANTANAL	5027	DAY	3	NIL	NS	YES	YES	NIL	Steel plate
39	1800/21	LINX	SONJA	99AB	DAY	3	NIL	B	YES	YES	NIL	
40	0300/22	QP	MORNING CELINE	CO924/OC924	DAY	1	NIL	A & OLD D	YES	YES	NIL	230 cars discharged to wharf, running short on time. Vessel has AMSA deficiency and requested layup for up to 24hrs (obtain some charts etc); QUBE HAD LABOUR IN 23/7 TO MOVE CARS FROM WHARF
41	0400/22	LINX	HERCULES LEADER	63	DAY	1	NIL	A & C	YES	YES	NIL	

42	0100/23	LINX	TRANS FUTURE 6	114	DAY	1	NIL	D & M	YES	YES	NIL	AGENT COULDN'T GET EARLIER PILOT
43	1800/22*	QP	MOROBE CHIEF	1919S/1923N	DAY	2	NIL	B	YES	YES	24/7/19: Morobe Chief had	VESSEL CUT OFF 1400/23; Morobe Chief delayed 32hrs awaiting receipt cut-off; •25/7/19 – Morobe Chief warped 105m upstream to allow Talisman to berth and work on arrival. Morobe Chief had extended port stay due to break down of C002 and having to finish working vessel with ships gear
44	1800/25	QP	TALISMAN	CF917/FF933	NIGHT	3	NIL	W3	YES	YES	NIL	
45	0800/27	QP	BALTIC HIGHWAY	167	EVE	2	NIL	A & C	YES	YES	NIL	
46	1300/27	LINX	SONJA	99BA	NIGHT	1	NIL	B	YES	YES	NIL	
47	1400/28	QP	SOFRANA TOURVILLE	231N	EVE	2	NIL	B	YES	YES	NIL	29/7/19 – Sofrana Tourville warped 70m upstream to allow it to use Gottwald to load screeners; had to wait for Nippon Hwy to depart
48	2200/28	QP	NIPPON HIGHWAY	153	DAY	1	NIL	A & C	YES	YES	NIL	
49	0400/29	QP	BELUGA ACE	12	EVE	3	NIL	E	YES	YES	NIL	SPI REQUIRED; passed on initial inspection
50	0900/29	LINX	FILIA ARIEA	37	EVE	2	24HRS	B	YES	YES	NIL	Filia Ariea (OkTedi) delayed 24hrs awaiting Sofrana Tourville to depart which was using Gottwald for heavy lifts (and Deer Park was out with hoist motor fan issue
51	0200/30	QP	LAKE WANAKA	1914	DAY	1	NIL	A & C	YES	YES	NIL	
52	2300/30	QP	FRONTIER ACE	161	DAY	3	NIL	E	YES	YES	NIL	
53	1800/31	QP	MELANESIAN PRIDE	014S/015N	DAY	2	NIL	B	YES	YES	NIL	PIS; 2 x class 1 (need to be berth 3); PORT

**Legend - Berth # and Laydown**

	Primary
	Secondary
	Tertiary

SUMMARY	LINX	QUBE	COMMENT
<b>TOTAL VESSELS FOR MONTH</b>	<b>19</b>	<b>34</b>	
<b>GREEN BERTH (Primary)</b>	<b>18</b>	<b>34</b>	
<b>ORANGE BERTH (Secondary)</b>	<b>1</b>	<b>0</b>	
<b>RED BERTH (Tertiary)</b>	<b>0</b>	<b>0</b>	
<b>GREEN LAYDOWN (Primary)</b>	<b>14</b>	<b>29</b>	
<b>ORANGE LAYDOWN (Secondary)</b>	<b>5</b>	<b>5</b>	
<b>RED LAYDOWN (Tertiary)</b>	<b>0</b>	<b>0</b>	
<b>NUMBER OF BERTHING DELAYS</b>	<b>5</b>	<b>9</b>	
<b>NUMBER OF MACHINERY ISSUES/REQUESTS NOT MET</b>	<b>0</b>	<b>0</b>	



NUMBER	DATE	STEVE-DORE	VESSEL	VOYAGE	STARTING SHIFT	BERTH #	BERTH DELAY	LAYDOWN	MACHINERY REQUEST RECEIVED	MACHINERY REQUEST FILLED	MACHINERY ISSUES	NOTES
1	0500/1	LINX	GLOBAL LEADER	28	EVE	1	NIL	A	YES	YES	NIL	
2	0400/3	QP	AEGEAN HIGHWAY	107	DAY	3	NIL	E	YES	YES	NIL	
3	0200/3	QP	TIGER	CF918/FF932	DAY	1	NIL	C	YES	YES	NIL	
4	0500/3	QP	SZECHUEN	1912N/1912N	NIGHT	2	NIL	OS, B, D	YES	YES	NIL	
5	0200/4	QP	BOHEME	CO925/OC925	DAY	1	NIL	A & C	YES	YES	NIL	
6	1400/6	LINX	TRANS FUTURE 7	114	NIGHT	1	NIL	A	YES	YES	NIL	At midday on day prior to arrival ETA was revised from 0800/6th to 1530/6th due to adverse weather. Linx had to change labour from 1300/6 start to 2000/6 start. Autocare didn't upload scanners correctly.
7	1500/6	LINX	PLEIADES SPIRIT	51	NIGHT	2	NIL	A	YES	YES	NIL	
8	1000/7	LINX	SELENE LEADER	30	EVE	1	NIL	C	YES	YES	NIL	Linx experienced some issues with yard scanners. Lots of exports to load on this vessel.
9	1500/8	QP	AAL HONG KONG	906ES	EVE	3	NIL	NS, F, J, H	YES	YES	NIL	Vessel experienced wind overnight before arrival and went from 1200PS to 1500PS. Labour was booked from 1700hrs. Vessel berthed 1900hrs.
10	1100/9	QP	GLOVIS CARAVEL	24	NIGHT	1	NIL	C	YES	YES	NIL	
11	1800/10	LINX	GALAXY LEADER	31	DAY	2	NIL	M	YES	YES	NIL	
12	2300/10	QP	GLOVIS CHORUS	73	DAY	1	NIL	D	YES	YES	NIL	
13	1300/12	QP	ADRIATIC HIGHWAY	107	EVE	1	NIL	A & C	YES	YES	NIL	Lots of exports to load on this vessel
14	1800/12	QP	RHL AURORA	1921S/1925N	DAY	2	NIL	B	YES	YES	NIL	Vessel has elected to delay berthing by 24hrs to allow Donington to be able to berth so that RHL Aurora can load Dump Truck Trays ex Donington. Provision that
15	0600/13	QP	SOFRANA SURVILLE	254N	DAY	2	NIL	B	YES	YES	NIL	0500/14ETD amended to 0930/14ETD
16	0800/13	LINX	FILIA ARIEA	38	EVE	1	NIL	B	YES	YES	NIL	MK had issue with some haz containers stacked too deep in B1-6
17	1000/13	QP	TONSBERG	CO927/FF931	EVE	3	NIL	E	YES	YES	NIL	CO voyage with port rotation FRE-MEL-PKL-BNE, however Roro sized vessel
18	1600/13	QP	AAL SHANGHAI	907ES/907EN	DAY	3	NIL	F, NS	YES	YES	NIL	Crane wire broke Sat 17th PM so Qube chose to use Deer Park to be able to finish in allocated time.
19	2300/13	LINX	DONINGTON	12	DAY	3	NIL	M, OLD D	YES	YES	NIL	
20	2359/14	LINX	SONJA	100AB	NIGHT	1	16HRS	B	YES	YES	NIL	ETA 1300/15th on eco speed; adjusted according to berth schedule.
21	0001/15	QP	DIVINE ACE	56	DAY	1	NIL	C	YES	YES	NIL	
22	1700/15	QP	VIKING DIAMOND	1957/FP957	DAY	1	8HRS	A	YES	YES	NIL	Armacup wanted to get this vessel worked ahead of Carrera.
23	0300/16	QP	CARRERA	1915/FP915	EVE	2	8HRS	A & C	YES	YES	NIL	Qube struggled to finish (volvos in deck down below. Had to take labour off Oregon Hwy and AAL Shangai to be able to finish.
24	1600/16	QP	OREGON HIGHWAY	103	NIGHT	1	NIL	C & D	YES	YES	NIL	Qube struggled to finish as labour had gone over to assist Carrera on Fri 16th PM. Ended up putting 200 vehicles (Toy & Mit) on berth instead of C and D Block (due to taking too long filling half scanned rows).
25	2230/16	LINX	BBC ZARATE	103304	EVE	1	NIL	UHOOK	YES	YES	NIL	Linx completed train discharge and 19 x bblk (broken down shovel) in 4 shifts and took Gottwald out and back via B Block.
26	0200/19	QP	TRAVIATA	CF919	DAY	2	NIL	M, B, D	YES	YES	NIL	MAIDEN VOYAGE TO BRISBANE; backload 1000 cars ex Carrera and Viking Diamond; Qube inadvertently loaded 50 and had to unload 50 T/S vehicles (they took cars from A57 instead of A21).
27	1500/19	QP	LAVENDER ACE	60	NIGHT	3	NIL	E	YES	YES	NIL	
28	0530/20	QP	NOCC ATLANTIC	8	NIGHT	1	8HRS	A & C	YES	YES	NIL	Delayed berthing due to having to wait for Traviata to depart from 210m stern as Traviata could not berth further downstream due to cars on wharf from Oregon Hwy.

29	1630/20	LINX	SONJA	100BA	NIGHT	2	NIL	B	YES	YES	NIL	Linx had absentees on m/night shift and could not replace a crane driver. So only one driver for the whole night. The dayshift was put on for 10hrs and completed in approx 9hrs.
30	0700/21	QP	TIJUCA	CO928	EVE	1	NIL	C	YES	YES	NIL	
31	1030/21	LINX	TRANS FUTURE 5	118	EVE	3	NIL	E	YES	YES	NIL	Vessel completed in 7hrs and sailed 1hr earlier
32	1400/21	QP	BLUE RIDGE HIGHWAY	92	NIGHT	2	NIL	D	YES	YES	NIL	Qube struggled to finish, they extended gang 1hr and put 100 vehicles on berth 1.
33	2030/21	QP	ORCA ACE	9	EVE	2	NIL	M	YES	YES	NIL	original ETA was 17th Aug; BSD received 19/8/19 with NO permission to berth must remain at anchorage. BSD received 21/8/19 with permission to berth and SPI. 22/8/19 SPI commenced 0645hrs and at 1010hrs took bugs to entomologist and 1110hrs got clearance to discharge. Labour was booked for 1500hrs start.
34	21-Aug	QP	KWEILIN	1913N	NIGHT	2	NIL	B	YES	YES	NIL	Awaiting FSM4 to discharge T/S containers
35	0500/22	QP	ARCADIA HIGHWAY	201	DAY	1	NIL	A & C	YES	YES	NIL	
36	1500/22	QP	FORUM SAMOA 4	015S/016N	NIGHT	3	NIL	B & H	YES	YES	NIL	
37	0800/23	LINX	HOEGH TRIDENT	180	EVE	1	NIL	C & M	YES	YES	NIL	
38	0001/24	QP	MERLIN ARROW	0519	EVE	3	8HRS	NS, F, J, H	YES	YES	NIL	
39	1600/25	QP	THERMOPYLAE	CO929	DAY	1	NIL	A & D	YES	YES	NIL	Vessel could have worked
40	0600/27	LINX	CASSIOPEIA LEADER	17	DAY	1	NIL	A, C, D	YES	YES	NIL	Poor stow, all discharge and load completed by 0400hrs. However 0700hrs gang to start to finish lashing for approx 2-3hrs and then transfer to Trans Leader
41	0100/28	LINX	TRANS LEADER	19	DAY	3/4	NIL	E	YES	YES	NIL	Trans Leader berthed at #3/4 so that no pressure for Cassiopeia Leader to be gone for Tysla to berth.
42	0200/28	QP	TYSLA	CF920/FF935	DAY	2	NIL	A	YES	YES	NIL	Berthed at FI2 as not certain if Cassiopeia Leader would depart by 0400/28th, so Trans Leader berthed at FI3/4.
43	1700/28	LINX	FILIA ARIEA	39	DAY	2	NIL	B	YES	YES	NIL	Vessel targeted 0100/29th however arrived a bit earlier; no midnight booked. MK had issue with some MED 17t containers stacked in Rows 1-6 behind light boxes.
44	1000/30	QP	LAKE COMO	1916/FP916	EVE	1	NIL	C	YES	YES	NIL	
45	0200/31	QP	TULANE	CF921/FF936	DAY	1	NIL	C	YES	YES	NIL	
46	0200/31	QP	MOROBE CHIEF	1923S/1927N	DAY	2	NIL	B	YES	YES	NIL	Vessel worked ok

**Legend - Berth # and Laydown**

	Primary
	Secondary
	Tertiary

SUMMARY	LINX	QUBE	COMMENT
<b>TOTAL VESSELS FOR MONTH</b>	<b>15</b>	<b>31</b>	
<b>GREEN BERTH (Primary)</b>	<b>13</b>	<b>30</b>	
<b>ORANGE BERTH (Secondary)</b>	<b>2</b>	<b>1</b>	
<b>RED BERTH (Tertiary)</b>	<b>0</b>	<b>0</b>	
<b>GREEN LAYDOWN (Primary)</b>	<b>12</b>	<b>26</b>	
<b>ORANGE LAYDOWN (Secondary)</b>	<b>3</b>	<b>5</b>	
<b>RED LAYDOWN (Tertiary)</b>	<b>0</b>	<b>0</b>	
<b>NUMBER OF BERTHING DELAYS</b>	<b>1</b>	<b>4</b>	
<b>NUMBER OF MACHINERY ISSUES/REQUESTS NOT MET</b>	<b>0</b>	<b>0</b>	

NUMBER	DATE	STEVE-DORE	VESSEL	VOYAGE	STARTING SHIFT	BERTH #	BERTH DELAY	LAYDOWN	MACHINERY REQUEST RECEIVED	MACHINERY REQUEST FILLED	MACHINERY ISSUES	NOTES
1	2230/31	QP	SOFRANA TOURVILLE	232N	NIGHT	3	NIL	B	YES	YES	NIL	Vessel called DPW then AAT then DPW (as transhipments at DPW arrived late). Sofrana Tourville had time to wait for C002 to be finished on Morobe Chief before commencing work as were waiting for transhipments at DPW.
2	0001/2	QP	NIPPON HIGHWAY	154	DAY	1	NIL	A & C	YES	YES	NIL	
3	1100/3	LINX	TRANS FUTURE 6	115	EVE	1	NIL	A & C	YES	YES	NIL	
4	0001/6	QP	GRAND COSMO	101	DAY	1	NIL	A	YES	YES	NIL	
5	1115/7	QP	MELANESIAN PRIDE	015S/016N	NIGHT	2	NIL	B	YES	YES	NIL	T/S to discharge for Shansi
6	2100/7	QP	STAR KINN	0419	DAY	3	NIL	F & NS	YES	YES	NIL	3/9/19 - forward ships crane not working, looking to use C002 for hatch 1 approx 8hrs work
7	0300/8	LINX	HOEGH LONDON	83	DAY	1	NIL	C	YES	YES	NIL	4/9/19 vessel was requested to fog in PKL following bugs found on cargo in MEL; T/S to discharge for Hoegh Jacksonville and Shansi
8	0001/8	QP	SHANSI	1914N	DAY	2	NIL	B	YES	YES	NIL	WAITED 24HRS FOR MEL PRIDE TO COMPLETE WORK TO GET T/SHIPMENTS
9	1200/8	LINX	HOEGH JACKSONVILLE	34	DAY	1	NIL	A	YES	YES	NIL	4/9/19 - will wait for Hoegh London as needs to load T/S
10	0900/8	QP	BELUGA ACE	13	DAY	1	32HRS	A & C	YES	YES	NIL	Awaiting Hoegh Jacksonville to depart
11	0930/9	LINX	GLOBAL LEADER	29	DAY	3	32HRS	E	YES	YES	NIL	Awaiting Star Kinn to depart
12	1600/9	QP	AAL KOBE	19004	NIGHT	1	24HRS	UHOOK	YES	YES	NIL	Vessel had to wait for a berth in Geelong. Universal cranes have enquired about lifting 102t piece from wharf to truck if ship's cranes do not reach cradle on truck. Awaited Beluga Ace to depart FI1
13	1800/9	LINX	SONJA	101AB	DAY	2	32HRS	B	YES	YES	NIL	Awaiting Shansi to depart
14	1800/10	LINX	SELENE LEADER	31	DAY	1	8HRS	A & C	YES	YES	NIL	Awaiting AAL Kobe to depart
15	0100/12	LINX	FILIA ARIEA	40	DAY	2	NIL	B	YES	YES	NIL	CUT-OFF 1400/11TH - becomes ETA of vessel
16	0200/12	QP	DON PASQUALE	CO930/OC930	DAY	3	NIL	E	YES	YES	NIL	
17	0800/12	QP	BRASILIA HIGHWAY	120	EVE	1	NIL	A	YES	YES	NIL	
18	1600/12	QP	TOSCANA	CO932/OC932	NIGHT	3	NIL	E	YES	YES	NIL	
19	2000/13	LINX	TRITON LEADER	71	DAY	2	NIL	C	YES	YES	NIL	
20	0830/14	QP	ONYX ACE	61	EVE	1	NIL	A & C	YES	YES	NIL	
21	1300/14	QP	AAL NEWCASTLE	908ES	NIGHT	3	NIL	F & NS	YES	YES	NIL	CHARTERED BY SWIRES
22	2100/14	QP	SOFRANA SURVILLE	255N	DAY	2	NIL	B	YES	YES	NIL	
23	0200/16	QP	LAKE TAUPO	1958	EVE	2	NIL	C	YES	YES	NIL	Passed SPI
24	0500/16	QP	ETERNAL ACE	68	EVE	1	NIL	A & C	YES	YES	NIL	Passed SPI
25	1500/16	QP	ADRIATIC HIGHWAY	108	DAY	1	8HRS	D	YES	YES	NIL	Awaiting Eternal Ace to depart
26	2100/16	LINX	SONJA	101BA	DAY	2	NIL	B	YES	YES	NIL	
27	0500/17	LINX	TRANS FUTURE 7	115	EVE	3	16HRS	E	YES	YES	NIL	Awaiting AAL Newcastle to depart; Passed SPI
28	0800/17	LINX	HOEGH NEW YORK	117	NIGHT	1	8HRS	A & C	YES	YES	NIL	Awaiting Adriatic Hwy to depart
29	0400/18	QP	LAKE WANAKA	1917	DAY	2	NIL	C	YES	YES	NIL	
30	2200/18	QP	GRAND ORION	110	DAY	2	NIL	A	YES	YES	NIL	
31	0800/20	QP	TAMESIS	CO933/OC933	EVE	1	NIL	C	YES	YES	NIL	
32	0100/21	QP	SOUTHERN HIGHWAY	89	EVE	1	NIL	A & D	YES	YES	NIL	Vessel failed SPI - Treated at berth then vacated to allow the Carmen to berth at AAT1. RHL Aurora at AAT2
33	1000/21	QP	RHL AURORA	1925S	EVE	3	NIL	B	YES	YES	NIL	
34	0200/22	QP	CARMEN	CF922/FF938	DAY	1	NIL	C	YES	YES	NIL	Stern ramp issues in AKL, Stern ramp being repaired in AKL before sailing to BNE
35	0300/23	QP	SOUTHERN HIGHWAY	89	EVE	1	NIL	A & D	YES	YES	NIL	Vessel passed inspection and allowed to discharge
36	1030/23	QP	OREGON HIGHWAY	104	NIGHT	3	NIL	E & A	YES	YES	NIL	
37	0200/24	QP	PARSIFAL	CF923/FF939	DAY	1	NIL	A & C	YES	YES	NIL	

38	2300/24	LINX	BBC BRAZIL	5044	DAY	1	NIL	UHOOK	YES	YES	NIL	BBC advised of export cargp (Grove Cranes) 19 pcs, 1,285.90 R/T less than 24 hours prior to vessel arrival. BBC advised 2 extra shifts to complete. Berth available but shore based crane not available for load.
39	0500/25	QP	GLOVIS CARAVEL	25	EVE	2	NIL	A & C	YES	YES	NIL	
40	1700/25	LINX	FILIA ARIEA	41	DAY	2	NIL	B & F	YES	YES	NIL	
41	0500/26	QP	TITANIA	CZ905/OZ905	EVE	3	NIL	E	YES	YES	NIL	
42	1800/27	QP	FORUM SAMOA 4	016S/017N	NIGHT	2	NIL	B	YES	YES	NIL	
43	0200/28	QP	CARRERA	1918	DAY	3	NIL	E	YES	YES	NIL	
44	0830/28	QP	FLORIDA HIGHWAY	101	EVE	1	NIL	A & C	YES	YES	NIL	
45	28-Sep	QP	KWANGTUNG	1915N	DAY	2	NIL	B	YES	YES	NIL	Kwangtung waited approx 24hrs for Forum Samoa to depart to take T/S
46	0600/30	LINX	AURIGA LEADER	80	EVE	1	NIL	A	YES	YES	NIL	PASSED SPI ON INITIAL INSPECTION

**Legend - Berth # and Laydown**

	Primary
	Secondary
	Tertiary

SUMMARY	LINX	QUBE	COMMENT
<b>TOTAL VESSELS FOR MONTH</b>	<b>14</b>	<b>32</b>	
<b>GREEN BERTH (Primary)</b>	<b>14</b>	<b>32</b>	
<b>ORANGE BERTH (Secondary)</b>	<b>0</b>	<b>0</b>	
<b>RED BERTH (Tertiary)</b>	<b>0</b>	<b>0</b>	
<b>GREEN LAYDOWN (Primary)</b>	<b>14</b>	<b>12</b>	
<b>ORANGE LAYDOWN (Secondary)</b>	<b>0</b>	<b>2</b>	
<b>RED LAYDOWN (Tertiary)</b>	<b>0</b>	<b>0</b>	
<b>NUMBER OF BERTHING DELAYS</b>	<b>5</b>	<b>3</b>	
<b>NUMBER OF MACHINERY ISSUES/REQUESTS NOT MET</b>	<b>0</b>	<b>0</b>	

NUMBER	DATE	STEVE-DORE	VESSEL	VOYAGE	STARTING SHIFT	BERTH #	BERTH DELAY	LAYDOWN	MACHINERY REQUEST RECEIVED	MACHINERY REQUEST FILLED	MACHINERY ISSUES	NOTES
1	0130/1	LINX	CASSIOPEIA LEADER	18	DAY	2	NIL	A, C, D	YES	YES	NIL	NO SPI REQUIRED
2	0730/1	LINX	TRANS FUTURE 5	119	EVE	1	NIL	D	YES	YES	NIL	PASSED SPI ON INITIAL INSPECTION
3	1500/3	QP	SERENITY ACE	93	MIDNIGHT	1	NIL	A	YES	YES	NIL	NO SPI REQUIRED EX PKL
4	0600/4	QP	HMAS CHOULES		DAY	1	NIL	M	YES	YES	NIL	HMAS CHOULES; discharge cargo; 150 soldiers embark
5	1500/4	QP	SOFRANA TOURVILLE	233N	MIDNIGHT	2	NIL	B	YES	YES	NIL	30/9/19 - ELECTED TO OMIT DPW AND DO TOTAL EXCHANGE OF 500 AT AAT (134 load); VESSEL CALLING DPW TO COLLECT T/S
6	1800/5	LINX	SONJA	102AB	MIDNIGHT	1	NIL	B	YES	YES	NIL	Used Gottwald due to Deer Park being on Sofrana Tourville (pre-discussed at Ops Meeting)
7	0100/6	LINX	DIGNITY ACE	15	DAY	3	NIL	E & HB	YES	YES	NIL	No SPI required ex PKL
8	0500/6	QP	DIVINE ACE	57	DAY	1	NIL	C	YES	YES	NIL	No SPI required
9	1800/6	QP	MOROBE CHIEF	1927S/1931N	MIDNIGHT	2	NIL	B	YES	YES	NIL	1 x F/R o/h measurements were incorrect
10	1800/7	QP	DON CARLOS	CO934	MIDNIGHT	1	NIL	A & C	YES	YES	NIL	No SPI required ex PKL
11	1800/7	QP	FREMANTLE HIGHWAY	48	DAY	1	NIL	A & C	YES	YES	NIL	No SPI required
12	0100/9	LINX	KARIYUSHI LEADER	10	EVE	1	NIL	A & C	YES	YES	NIL	PASSED SPI ON INITIAL INSPECTION; ALL VEHICLES HELD FOR INSPECTION BY DAWR UPON DISCHARGE (ALL BNE WERE ON DECK 10).
13	0200/9	QP	TARAGO	CF925	DAY	3	NIL	E	YES	YES	NIL	LOADED T/S EX CARRERA
14	1500/9	LINX	FILIA ARIEA	42	MIDNIGHT	2	NIL	B	YES	YES	NIL	completed at 0130/11th, labour was booked until 0700hrs
15	1200/10	QP	MORNING PEACE	CO936/OC936	EVE	1	NIL	C	YES	YES	NIL	
16	0400/11	QP	GRAVITY HIGHWAY	41	DAY	1	NIL	A & D	YES	YES	NIL	WAS DELAYED THROUGH TSV DUE TO BMSB INSPECTION; vessel detained by AMSA whilst alongside, vessel stayed an additional 9hrs to rectify issue
17	1830/11	QP	ORCA ACE	10	EVE	1	NIL	A & C	YES	YES	NIL	SPI REQUIRED
18	0100/12	LINX	SONJA	102BA	DAY	2	NIL	B	YES	YES	NIL	
19	1400/15	QP	STAR KILIMANJARO	0719	MIDNIGHT	3	NIL	NS, J, H	YES	YES	NIL	Stow - not preslung and not as per plan plus rain delay on 17/10 PM
20	0030/16	LINX	GOLIATH LEADER	86	DAY	1	NIL	A & C	YES	YES	NIL	10/10 - delayed 17hrs through TSV
21	0500/16	QP	HMAS ADELAIDE		DAY	1	NIL	UHOOK	YES	YES	NIL	Receiving additional cargo through gate from 14-16th
22	1500/16	QP	MELANESIAN PRIDE	016S/017N	MIDNIGHT	2	NIL	B	YES	YES	NIL	class 1 NEQ = 10t. Vessel berths PORT side due to stbd side cranes. 9/10 - provided Neptune with options to a) beat Star Kilimanjaro for berth 3; b) work PORT at berth 2 and turn to load Class1; c) load class 1's at alternate berth; d) delay berthing until after Star Kilimanjaro departs. 11/10- Neptune decided to not receive 1 x CI 1 container to be under 7.5t NEQ for berth 2. 16/10 PM - Bunker barge unable to attend until 18/10 PM, Neptune checked if vessel could remain alongside but cannot due to berth congestion. 17/10 AM - Neptune approached Swire about delaying berthing of Szechuen so Mel Pride could get bunker barge at 2030/17th for 5hrs and then load Class 1's and depart. Szechuen midnight gang was partly going to Star Kilimanjaro anyway so Swire agreed to delay berthing to 0400/18th.
23	1400/17	LINX	TRANS FUTURE 6	116	MIDNIGHT	1	NIL	A	YES	YES	NIL	Delayed 24hrs to BNE due to going around Typhoon Hajibis after departing Saipan. Vessel will berth on arrival at DPW 5 for SPI then move to AAT1 at 2200hrs after HMAS Adelaide has departed at 1800hrs. Vessel arrived 2hrs early at PS so earlier SPI was arranged on day

24	PM/17	QP	SZECHUEN	1916N	MIDNIGHT	2	NIL	OS, B	YES	YES	NIL	Awaiting Mel Pride to work first so can collect T/S. 17/10 AM - Neptune approached Swire about delaying berthing of Szechuen so Mel Pride could get bunker barge at 2030/17th for 5hrs and then load Class 1's and depart. Szechuen midnight gang was partly going to Star Kilimanjaro anyway so Swire agreed to delay berthing to 0400/18th. Mel Pride departed 0130/18th so Szechuen brought berthing forward to 0330/18th. Berthing Issue on arrival - Thursday - The Star Kilimanjaro at berth 3 had drifted approx. 5m off marks upstream whilst alongside. I asked Qube Shift Manager and Mooring Master on Thursday afternoon to get vessel to pull back on lines prior to Szechuen berthing at berth 2 early AM/18th (time was not known as Melanesian Pride stayed alongside to bunker and load Class 1's and Szechuen had agreed to berth after Melanesian Pride had completed bunkers and Class 1's). In addition, the head lines on Star Kilimanjaro had to be shifted back a bollard towards berth 3 otherwise they would foul on Szechuen; Szechuen's Mooring sheet indicated bridge position for 455m mark instead of 293m mark (The bow and stern positions were correct however the bridge position was incorrect as I had typed 18m instead of 180m in the Bow to Bridge section, so the calculations for the bridge position were out). This created some confusion for the Mooring Master and approaching Szechuen and lead to confusion as to whether the vessel was meant to be head down or head up. The vessel and mooring sheet all indicated head down however the bridge position seemed to lead the mooring crew to believe that the vessel was going to be head up; The Mooring Master called me at approx. 0315/18th to advise that the Pilot did not think the vessel would fit and he wanted to take the vessel back. The pilot agreed to hold vessel in River whilst we were working through the issue. The Mooring master acknowledged that he had shifted the Star Kilimanjaro's lines but the vessel was not back on original berth marks. As the Star Kilimanjaro had not pulled back on lines, the Mooring Master contacted foreman for Star Kilimanjaro straight away to stop operations and contacted crew to pull back on lines. I assured Mooring Master that vessel would fit if Star Kilimanjaro was back on marks. I also clarified with Mooring Master the stern position for Szechuen so that he could see approximately where the bridge position should be. The Pilot then asked for distance at berth 2 between both ships. I provided the distance from bow of Trans Future 6 (berth 1) = 247m to bow of Star Kilimanjaro (berth 3) = 490m. Total distance was 243m for the Szechuen (LOA 200m) to berth in. The nominated marks for Szechuen were bow: 273m and stern: 473m; Before the Star Kilimanjaro had pulled back 5m, the Szechuen at approx. 0330/18th decided to attempt berthing and successfully did so being alongside at approx. 0345/18th and all fast by 0415/18th. Whilst the Szechuen was coming alongside, the Star Kilimanjaro pulled up on lines towards DP World providing 17m separation between the Szechuen and Star Kilimanjaro upon final rest.
25	0400/18	QP	AAL HONG KONG	909ES	MIDNIGHT	3	10HRS	NS, F, E	YES	YES	NIL	U/Hook BBLK (Gas components) and 8500t steel; Awaiting departure of Star Kilimanjaro which was delayed 2 shifts due rain and stow issues.
26	0700/18	LINX	HOEGH TRANSPORTER	145	EVE	1	NIL	A & C	YES	YES	NIL	
27	2300/18	QP	SWIFT ACE	95	DAY	1	NIL	M	YES	YES	NIL	Delayed 24hrs to BNE due to being fogged in TSV, did not pass inspection as live bug found and had to go to entomologist - stevedores delayed. Vessel had to refog in TSV. ETA BNE revised from 1430/16th to 2100/17th then 1500/18 then 2300/18 - vessel slowed to meet berthing time in BNE
28	2315/18	QP	ONYX ARROW	95	MIDNIGHT	1	8HRS	M	YES	YES	NIL	Delayed berthing awaiting departure of Swift Ace; Onyx Arrow was subject to SPI on arrival and failed inspection. Onyx Arrow shifted to Inner Anchorage to conduct fogging on Sunday 20th then moved to QBT at 0600/22nd for DAWR re-inspection; passed re-inspection approx 1000/22nd and was able to book labour for dayshift 23rd 0500hrs start.
29	0500/19	QP	MIRACULOUS ACE	90	EVE	1	8HRS	D	YES	YES	NIL	Delayed berthing awaiting departure of Onyx Arrow; Miraculous Ace was subject to SPI on arrival and failed inspection. Miraculous Ace shifted to Inner Anchorage (with Onyx Arrow) to conduct fogging on Monday 21st. AAT indicated to MOL that a layup berth at AAT would be available PM/23 or AM/24 for DAWR re-inspection and ability to work immediately after, however Beluga Ace had priority for berth as Miraculous Ace still required DAWR clearance. MOL requested to prioritise Miraculous Ace over Beluga Ace. Miraculous Ace was allocated berth 1700/23 following Onyx Arrow departure (as Sofrana Surville ETD was uncertain due to trailer trial and loading boat from River). Miraculous Ace booked DAWR re-inspection for 1700/23 and labour to commence 2300/23.
30	0900/20	QP	LAKE COMO	1919	EVE	2	NIL	A & C	YES	YES	NIL	Delayed 3 days due to Typhoon Hajibis; Sailing brought forward 2hrs as used Miraculous Ace Sun 20th Eve shift labour due to Miraculous Ace not getting DAWR clearance to discharge.
31	1430/20	QP	ADRIATIC HIGHWAY	109	DAY	1	8HRS	D & M	YES	YES	NIL	18/10 - due to yard congestion would be able to berth AM/21st but unable to commence labour until 1500/21st. 20/10- due to Onyx Arrow and Miraculous Ace both not discharging on weekend, Adriatic Hwy was able to commence at 0700/21st. Large volume and Qube working other vessels at AAT and off-site - 3 shifts were allocated and utilised.
32	1600/20	QP	SPLENDID ACE	125	EVE	2	16HRS	A & C	YES	YES	NIL	Delayed berthing awaiting departure of Lake Como; 18/10 - due to yard congestion unable to commence until 1500/21 however due to Onyx Arrow and Miraculous Ace not working, Splendid Ace was able to commence immediately after Lake Como departed at 1200/21st.

33	1830/21	QP	SOFRANA SURVILLE	256N	DAY	2	NIL	B	YES	YES	NIL	Vessel arrived approx 18/10 however did not want to berth until PM/21st so that they could meet window at DPW (awaiting T/S containers ex Hammonia Istra). Truck and trailer operation was trialled (2 x Kalmar dock trucks with 2 x Houcon trailers). Positive feedback. Approx 30 container discharge and remainder load container
34	0200/22	QP	TITUS	CO937/OC937	DAY	1	NIL	A & C	YES	YES	NIL	Vessel was delayed 2hrs berthing due to River movements; labour commencement was adjusted from 0700 to 0900hrs on day prior to berthing.
35	1100/22*	QP	ONYX ARROW	95	DAY	1	NIL	A & C	YES	YES	NIL	Vessel returned to discharge, 0500hrs start
36	2200/23*	QP	MIRACULOUS ACE	90	MIDNIGHT	1	NIL	A, C, D	YES	YES	NIL	Vessel berthing PM/23 after Onyx Arrow departs to undergo DAWR re-inspection and then commence labour at 2300/23rd.
37	0900/24	LINX	FILIA ARIEA	43	EVE	2	NIL	B	YES	YES	NIL	Vessel worked downstream of berth 2 to allow Salome to berth with Celebrity Solstice overhanging in Berth 1. Vessel completed operations at 1900hrs.
38	1030/24*	QP	BELUGA ACE	14	EVE	1	NIL	A, C, D	YES	YES	NIL	Vessel received BSD for fogging (no SPI). Vessel going to GP Berth on arrival to fog and then receive clearance then berth at AAT FI 1 following departure of Miraculous Ace. Vessel must vacate AAT FI 1 by AM/25th as cruise vessel at Grain Berth overhanging 90m in AAT alongside 0730/25-2000/25th).
39	0600/25	QP	SALOME	CF926/FF943	MIDNIGHT	1	NIL	A	YES	YES	NIL	Vessel allowed to berth with stern at 85m mark for SPI on arrival as Celebrity Solstice was at GB utilising forst 82m of quayline for lines. WWL paid linesman to warp vessel to 60m stern position to commence 2300 discharge operations. Vessel had bug issues in AKL and therefore required SPI in BNE
40	1800/25	LINX	BBC LISBON	1152021	DAY	1	32HRS	UHOOK	YES	YES	NIL	Last Bombardier train vessel; 2 x Heat exchangers. Vessel completed operations 0200/28
41	0200/26	QP	RHL AURORA	1929S/1933N	DAY	2	NIL	B	YES	YES	NIL	C002 needed to be storm anchored for approx 2hrs due to strong winds. large exchange, trying to complete by 0700/28th when Deer Park is out of service for Lift Upgrade. Triton leader Working at Berth 3 /4 to allow RHL Aurora to be able to berth on arrival. Vessel lost time due to Deer Park not being able to boom up due to high winds.
42	0900/26	LINX	TRITON LEADER	72	EVE	3/4	NIL	E	YES	YES	NIL	Working at Berth 3 /4 to allow RHL Aurora to be able to berth on arrival. Vessel finished 2030hrs.
43	2100/26	QP	CARIBBEAN HIGHWAY	176	DAY	3	NIL	E	YES	YES	NIL	25/10 - Vessel detected bugs on voyage to BNE. KLI trying to get a fogging direction from DAWR prior to arrival, so they can fog upon arrival and then be reinspected. 25/10 - Vessel requested to layup at Berth 3 from AM/28th to do fogging and reinspection and then work on Wed 30th. 28/10 - SPI upon arrival with fogging crew on standby, they boarded about 10am. Reinspection booked for AM/29th so should have a result by lunchtime 29th for labour to be booked for 0500/30th start and 1000/30th ETD.
44	0900/28	QP	OREGON HIGHWAY	105	EVE	1	NIL	A & C	YES	YES	NIL	
45	0800/29	QP	TIRRANNA	CO938/FF942	EVE	1	NIL	A	YES	YES	NIL	
46	1400/30	LINX	SONJA	103AB	MIDNIGHT	1	NIL	B	YES	YES	NIL	Cruise vessel at GB on fenceline (head up).
47	2330/30	LINX	TRANS FUTURE 7	116	EVE	2	NIL	C	YES	YES	NIL	
48	0800/31	QP	FORUM SAMOA 4	017S/018N	EVE	3	NIL	B	YES	YES	NIL	Carrying Ammonium Nitrate Emulsion loaded in Syd and loading Class 1 in Brisbane giving NEQ approx 19.5t - vessel imperative to be wholly in berth 3

**Legend - Berth # and Laydown**

	Primary
	Secondary
	Tertiary

	LINX	QUBE	COMMENT
<b>SUMMARY</b>			
<b>TOTAL VESSELS FOR MONTH</b>			
<b>GREEN BERTH (Primary)</b>	15	33	
<b>ORANGE BERTH (Secondary)</b>	0	0	
<b>RED BERTH (Tertiary)</b>	0	0	
<b>GREEN LAYDOWN (Primary)</b>	14	25	
<b>ORANGE LAYDOWN (Secondary)</b>	1	8	
<b>RED LAYDOWN (Tertiary)</b>	0	0	
<b>NUMBER OF BERTHING DELAYS</b>	1	5	LINX - BBC LISBON 32HRS;
<b>NUMBER OF MACHINERY ISSUES/REQUESTS NOT MET</b>	0	0	

NUMBER	DATE	STEVE-DORE	VESSEL	VOYAGE	STARTING SHIFT	BERTH #	BERTH DELAY	LAYDOWN	MACHINERY REQUEST RECEIVED	MACHINERY REQUEST FILLED	MACHINERY ISSUES	NOTES
1	1545/31	QP	ONYX ACE	63	EVE	2	8HRS	A & C	YES	YES	NIL	29/10 - Due to Ruby Princess (cruise vessel with stern on our fence) and using bollards - unable to bring Onyx Ace in until departed. 1000/1ST - SPI cleared vessel; 1130/1st - live bugs found and BSD updated to fog and spray required. Vessel warped to F13 at 1600/1st after FS4 departed to layup (with 20m bow overhanging into DPW). There was not enough room for stern ramp to be lowered with Kewilin and Oberon alongside. Vessel had to wait until AM/4th to discharge. Due to 1100 units to discharge vessel moved to berth 1 as laydown was A & C blocks
2	0600/1	QP	GRAND ORION	111	EVE	1	NIL	C	YES	YES	NIL	
3	1430/1	QP	LAKE WANAKA	1920	MIDNIGHT	1	NIL	D	YES	YES	NIL	
4	1600/1*	QP	ONYX ACE	63	MIDNIGHT	3	NIL	A & C	YES	YES	NIL	Vessel warped to F13 to fog and then got clearance on Sun 3rd and booked labour for Mon 4th. Vessel warped to F11 as laydown was A&C Block. Not enough laydown area in E Block.
5	2-Nov	QP	KWEILIN	1917N	DAY	2	NIL	B	YES	YES	NIL	28/10 - Vessel due to arrive PS 0800/30 and anchor awaiting FSM4 transshipment containers.
6	0200/3	QP	OBERON	CF927/FF944	DAY	1	NIL	D	YES	YES	NIL	
7	1200/5	LINX	ANTARES LEADER	64	MIDNIGHT	1	NIL	A & C	YES	YES	NIL	
8	1600/5	LINX	VENUS LEADER	14	MIDNIGHT	2	NIL	A & C	YES	YES	NIL	
9	0100/6	QP	GREBE ARROW	0519	DAY	3	NIL	NS	YES	YES	NIL	
10	0400/6	LINX	SONJA	103BA	DAY	2	NIL	B	YES	YES	NIL	
11	1500/7	LINX	FILIA ARIEA	44	MIDNIGHT	2	NIL	B	YES	YES	C002 break down at 1430/8th - spreader unable to be attached. Electrician called back to site (1hr wait). Plug fixed, however circuit was blown and engineer had to come in 0700/9th to repair with a part. Linx pushed Deer Park out the way on PM/8th and used Gottwald for midnight shift and a few hours of dayshift 10th (utilising labour from Hoegh Tracer).	
12	2200/8	QP	SOFRANA SURVILLE	256S	DAY	2	48HRS	F	YES	YES	NIL	Due to delay of Filia Ariea departing (due to C002 breakdown) Sofrana elected to prioritise Tourville over Surville. Surville waited at anchor until AM/11th. ETD delayed 48hrs from BNE.
13	0100/9	LINX	HOEGH TRACER	22	DAY	1	NIL	A	YES	YES	NIL	
14	0900/9	QP	OCEAN HIGHWAY	173	EVE	3	NIL	E	YES	YES	NIL	
15	1000/9	LINX	HOEGH ASIA	147	MIDNIGHT	1	8HRS	C	YES	YES	NIL	
16	1730/9	QP	SOFRANA TOURVILLE	234N	EVE	2	NIL	B	YES	YES	NIL	Delayed berthing due to C002 being delayed due to C002 break down overnight. Tourville was prioritised over Surville so Tourville lost approx 8hrs.
17	1630/10	QP	FREMANTLE HIGHWAY	49	MIDNIGHT	1	NIL	A & C	YES	YES	NIL	
18	0200/11	QP	TAMERLANE	CF928/FF945	EVE	1	8HRS	D	YES	YES	NIL	Berth delay due to Surville being at berth due to C002 breakdown on PM/8th, so Tamerlane then followed Fremantle Hwy instead at Berth 1.
19	1000/12	LINX	TRANS FUTURE 5	120	MIDNIGHT	1	NIL	A	YES	YES	NIL	Due to high winds, Linx asked Autocare if they can scan into P1 and P2 areas instead of scanning per row (as the scanners were set up for). This was to avoid car doors flying open into rows that cars were discharging into. Autocare agreed and arranged direct with Linx.
20	0300/13	LINX	HOUTMANGRACHT	1907	DAY	3	NIL	UHOOK	YES	YES	NIL	3 x blades for CGWFP - replacement blades loaded in NTL (NTL project delayed 6mths) due to 1 x damaged blade at CGWFP when installing blades.
21	0500/13	QP	WALRUS ACE	8		1	NIL					Vessel directed for fogging prior to inspection (live bug found en route to BNE). AAT able to provide Berth 1 as a layup berth from 0930/13th to 2300/15th. MOL hoping to work Thur PM/ Fri AM. Vessel did not receive clearance and had to vacate to Patrick Berth 10 1600/15th to fog again. Was reinspected 1700/16th and granted approval to discharge. Walrus Ace came back to Berth 1 0830/17th and got a scratch gang together for 1300/17th start and order for Mon dayshift to complete.
22	0200/14	QP	MOROBIE CHIEF	1931S/1935N	DAY	2	NIL	B	YES	YES	NIL	



23	0800/15	LINX	JUPITER LEADER	30		3	NIL					1800/15th - Vessel failed SPI; 1900hrs start labour cancelled; Vessel was able to remain alongside at F13 to fog (lay-up fee applied); Vessel fogged and re-inspected PM/16th and failed; 2300hrs start labour cancelled; Vessel was able to remain alongside and fog again.Vessel re-inspected AM/18th and clearance received 1320/18th (bugs had be taken to ento); 1300hrs labour booked. 1800hrs bugs detected by stevedores in Mazda CX5 vehicles. Discharge ceased, awaiting DoA direction. DoA directed all vehicles to a shed or to be re-loaded on vessel and vessel to go 3 nautical miles off the coast and be treated. All discharge units (cars, roro, bblk) were re-loaded on dayshift 19th. Vessel treated at anchor and awaited clearance which was received 23rd subject to management plan (to put all CX5 units in a shed and treat). AAT are unable to provide a shed due to import steel in sheds. Jupiter has booked labour for 1300/23rd which had to be cancelled. On Mon 25th management plan was discussed with all parties (NYK, Mazda, Linx, DoA, Rentokil and AAT). Decision was made to leave 135 x CX5 BNE vehicles on board and discharge in PKL which have a heat treatment facility. Vessel commenced discharge at 2300/25th. Cargo was subject to surveillance and all 24 Mazda vehicles were Held for full inspection.
24	0200/16	QP	CARRERA	1921	EVE	1	NIL	A	YES	YES	NIL	
25	AM/17*	QP	WALRUS ACE	8	EVE	1	NIL	C	YES	YES	NIL	Vessel directed for fogging prior to inspection (live bug found en route to BNE). AAT able to provide Berth 1 as a layup berth from 0930/13th to 2300/15th. MOL hoping to work Thur PM/ Fri AM.
26	0700/16	QP	MORNING CHANT	CO941/OC941	DAY	2	NIL	A	YES	YES	NIL	
27	0200/19	QP	UNITED SPIRIT	1959	EVE	2	NIL	A	YES	YES	NIL	Vessel directed for fogging prior to inspection; Fogging 1200/19th; 1400/20th start.
28	0600/20	LINX	FILIA ARIEA	45	EVE	3	NIL	H	YES	YES	NIL	
29	2200/20	QP	MELANESIAN PRIDE	0175/018N	DAY	2	NIL	B	YES	YES	NIL	
30	21-Nov	QP	SHANSI	1918N	DAY	2	NIL	B	YES	YES	NIL	Vessel due to arrive BNE 19th however will await at anchor for Mel Pride to discharge to collect T/S containers. Vessel departed approx 5hrs early
31	1400/21	LINX	GOLIATH LEADER	87	MIDNIGHT	1	NIL	C	YES	YES	NIL	
32	2330/21	QP	HYPERION HIGHWAY	31	DAY	1	NIL	A & C	YES	YES	NIL	
33	1700/21	QP	MORNING MARGARETA	2		3	8HRS					
34	0500/22	LINX	POSITIVE LEADER	75	EVE	3	24HRS	E	YES	YES	NIL	
35	0630/22	QP	MARGUERITE ACE	88	MIDNIGHT	1	8HRS	C	YES	YES	NIL	
36	1425/23*	LINX	JUPITER LEADER**	30	MIDNIGHT	3	NIL	E	YES	YES	NIL	1800/16th - Vessel failed SPI; 1900hrs start labour cancelled; Vessel was able to remain alongside at F13 to fog (lay-up fee applied); Vessel fogged and re-inspected PM/17th and failed; 2300hrs start labour cancelled; Vessel was able to remain alongside and fog again.Vessel re-inspected AM/18th and clearance received 1320/18th (bugs had be taken to ento); 1300hrs labour booked.
37	0200/24	QP	GLORIOUS SAIKI	001S/001N	DAY	3	NIL	NS & F1	YES	YES	NIL	Vessel sailed 8hrs early
38	0300/24	QP	ADRIATIC HIGHWAY	110	EVE	1	NIL	A & C	YES	YES	NIL	
39	1700/24	LINX	SONJA	104AB	MIDNIGHT	2	NIL	B	YES	YES	NIL	
40	0900/25	QP	SOFRANA SURVILLE	257N	EVE	2	NIL	B	YES	YES	NIL	
41	0800/26	QP	TUGELA	CO942/FF946	EVE	1	NIL	A	YES	YES	NIL	
42	1630/26*	QP	DUGONG ACE**	6		2	NIL					Berthing for SPI only - no labour booked.
43	1700/26	LINX	TRANS FUTURE 6	117		1	NIL					Failed SPI at approx 1300hrs (booked for 0630/27th). Labour was booked for 1000hrs. Vessel will fog at berth 1 then move to berth 3 for reinspection at 0900/28th for labour at 1500hrs Thur 28th. Vessel passed reinspection. Scanners were unable to be re-uploaded so Toyotas were block stacked.
44	0100/27	QP	SOFRANA TOURVILLE	234S	DAY	2	NIL	B	YES	YES	NIL	
45	AM/27*	QP	MORNING MARGARETA	2	EVE	3	NIL	E	YES	YES	NIL	Passed re-inspection (booked for 0530/27th); had labour booked for 1200hrs start Wed 27th
46	AM/28	LINX	TRANS FUTURE 6**	117	EVE	3	NIL	E	YES	YES	NIL	Labour booked for 1500/28th; Vessel passed DoA reinspection at 1440/28th. Total 1 x day layup at AAT incurred.
47	0700/29	QP	NICKIE B	1937N	DAY	2	NIL	B	YES	YES	NIL	
48	0200/30	QP	TONSBERG	CF929/FF947		1	NIL					Failed SPI despite working through AKL and gaining 1 day on schedule (due to no delays in AKL). Vessel had allocated 24hrs labour, so we allowed vessel to stay on berth and maintain original ETD. Vessel organized to fog on PM/30th and reinspect AM/1st. If clearance was obtained vessel was going to discharge as much as possible and still vacate by 1600/1st. However, vessel did not receive a clearance on re-inspection (DoA had to wait until Mon) so Tonsberg vacated berth at 1600hrs to anchorage and received clearance subject to management plan at 1840/2nd. DoA, WWL, Qube and AAT had extensive meeting at 0930/3rd to understand discharge management plan.
49	0600/30	QP	TOKYO CAR	1922	EVE	2	NIL	A & C	YES	YES	NIL	Passed SPI
50	1300/30	QP	AAL FREMANTLE	01	MIDNIGHT	1	24HRS	UHOOK	YES	YES	NIL	

**Legend - Berth # and Laydown**

- Primary
- Secondary

SUMMARY		LINX	QUBE	COMMENT
<b>TOTAL VESSELS FOR MONTH</b>				
<b>GREEN BERTH (Primary)</b>		<b>14</b>	<b>30</b>	
<b>ORANGE BERTH (Secondary)</b>		<b>0</b>	<b>0</b>	

 Tertiary

<i>RED BERTH (Tertiary)</i>	0	0	
<i>GREEN LAYDOWN (Primary)</i>	14	27	
<i>ORANGE LAYDOWN (Secondary)</i>	0	3	
<i>RED LAYDOWN (Tertiary)</i>	0	0	
<i>NUMBER OF BERTHING DELAYS</i>	2	5	
<b>NUMBER OF MACHINERY ISSUES/REQUESTS NOT MET</b>	1	0	C002 BREAK DOWN

NUMBER	DATE	STEVE-DORE	VESSEL	VOYAGE	STARTING SHIFT	BERTH #	BERTH DELAY	LAYDOWN	MACHINERY REQUEST RECEIVED	MACHINERY REQUEST FILLED	MACHINERY ISSUES	NOTES
1	0100/1	LINX	NEPTUNE LEADER	93		2	NIL					Did not receive clearance from SPI on Sun 1st so had to vacate berth to anchorage at original ETD. Clearance received 1200/2nd and Linx allocated labour for 0700/3rd.
2	1900/1	QP	AAL SHANGHAI	910ES/910EN	DAY	3	8HRS	OS, F1	YES	YES	NIL	Awaiting Neptune Leader to depart
3	1000/2	QP	CARIBBEAN HIGHWAY	177	EVE	2	NIL	A	YES	YES	NIL	
4	AM/2*	LINX	NEPTUNE LEADER	93	DAY	2	NIL	C	YES	YES	NIL	
5	1200/2	LINX	SONJA	104BA	MIDNIGHT	2	24HRS	B	YES	YES	NIL	Awaiting Caribbean Hwy & Neptune Leader to depart.
6	1840/2	QP	TONSBERG	CF929/FF947	EVE	1	32HRS	A & C	YES	YES	NIL	Due to LOA of Tonsberg, had to wait for AAL Fremantle to depart.
7	0700/3	LINX	FILIA ARIEA	46	MIDNIGHT	2	32HRS	B	YES	YES	NIL	Awaiting Neptune Leader & Sonja to depart.
8	1400/5	QP	MERLIN ARROW	2019	MIDNIGHT	3	NIL	NS	YES	YES	NIL	
9	1800/6	QP	FORUM SAMOA 4	018S/019N	MIDNIGHT	2	NIL	B	YES	YES	NIL	
10	1030/6	QP	KWANGSI	1919N	DAY	3	NIL	B	YES	YES	NIL	
11	0400/7	QP	TIGER	CF930/OF930	DAY	1	NIL	A	YES	YES	NIL	SPI was on 7/12 and WWL chose to book labour for 8th as there was no berth congestion.
12	0100/9	LINX	PLEIADES SPIRIT	53	DAY	1	NIL	A	YES	YES	NIL	
13	1500/9	LINX	HOEGH AFRICA	115	DAY	2	8HRS	A & C	YES	YES	NIL	Awaiting Kwangsi to depart.
14	1800/9	LINX	GENTLE LEADER	80	MIDNIGHT	1	NIL	A & C	YES	YES	NIL	
15	0630/10	LINX	ANTARES LEADER	65	MIDNIGHT	1	8HRS	A, C & D	YES	YES	NIL	Awaiting Gentle Leader to depart.
16	1100/10	LINX	HOEGH AMERICA	115	MIDNIGHT	2	8HRS	A & C	YES	YES	NIL	Awaiting Hoegh Africa to depart.
17	0300/11	LINX	TRANS FUTURE 7	117		2	NIL					SPI BOOKED ON ARRIVAL; LABOUR 1900/11 START
18	AM/12*	QP	TALISMAN	CF931/AF001	EVE	3	NIL	E	YES	YES	NIL	ETA 0200/11TH; 10/12 BSD SAYS TO FOG ALL DECKS. VESSEL GOING TO PATRICKS TO FOG ON ARRIVAL BUT MUST VACATE 0900/12TH. TALISMAN WILL COME TO AAT TO RE-INSPECT AM/12TH AND WILL BOOK LABOUR TO WORK THAT AFTERNOON (2 SHIFTS).
19	PM/12*	LINX	TRANS FUTURE 7	117	EVE	1	NIL	A & C	YES	YES	NIL	SPI BOOKED ON ARRIVAL; LABOUR 1900/11 START; 1430/11 FAILED SPI. 1900HRS VESSEL WARPED TO F11 TO FOG PM/11 AND REINSPECT AM/12, HOPING TO GET SCRATCH GANG FOR PM/12. VESSEL MUST VACATE 0100/13 TO ALLOW SOFRANA TO BERTH.
20	0800/13	QP	COURAGEOUS ACE	131	EVE	3	NIL	E	YES	YES	NIL	
21	2030/12	QP	SOFRANA TOURVILLE	235N	DAY	2	NIL	B	YES	YES	NIL	PM/11 - SOFRANA NOW UNABLE TO STAY AT DPW DUE TO QC3 WITH BROKEN ROPE VESSEL NOW BERTHING F17 AND MUST VACATE 2030/12. HOWEVER AAT1 OCCUPIED UNTIL 0100/13 BY TF7 SO SOFRANA MAY HAVE TO GO TO INNER ANCHORAGE FOR A FEW HOURS.
22	AM/13*	QP	TRANQUIL ACE	78	EVE	1	NIL	D	YES	YES	NIL	10/12 AT QBT DOING FOGGING; REINSPECT 0530/11TH; BUGS TAKEN TO ENTO; PM/11TH - CONTROLLED DISCHARGED INSTRUCTED FOR ALL BNE CARGO. WILL REMAIN AT QBT TO DO FLUSHING, HOPING TO GET CLEAR STATUS AFTER FLUSHING AND THEN MOVING TO AAT TO DO DISCHARGE (Grain Berth N/A due to Voyager of Seas there on Sat)

23	0200/14	QP	MORNING MIDAS	1923		3	NIL					BSD STATED TO HAND OVER BUGS ONLY ON ARRIVAL AND AWAIT DIRECTION, NO SPI TO BE BOOKED DUE TO VESSEL BEING ON "VESSEL SCHEME". ARMACUP DISCUSSED WITH DOA CANBERRA ON FRIDAY. DECISION WAS MADE TO ALLOW "MORNING MIDAS" TO BOOK AN SPI ON ARRIVAL. FOLLOWING SPI DOA UNABLE TO MAKE A DECISION ABOUT BUGS FOUND (ALIVE AND FRESH DEAD). ARMACUP PUT PRESSURE ON CANBERRA ON SAT AND SUN AND DECISION WAS MADE BY DOA ON SUN AM TO REMOVE MORNING MIDAS FROM BERTH. MORNING MIDAS VACATED 1200/15TH. THIS THEN ALLOWED MORNING CAMILLA TO COME ALONGSIDE. OTHERWISE MORNING CAMILLA WOULD HAVE HAD TO WAIT UNTIL MON AM.
24	0530/14	QP	MORNING CAMILLA	CO943/OC943	EVE	3	NIL	E	YES	YES	NIL	fog on arrival after live bugs found in discharged vehicles in PKL
25	1200/14	QP	NORTHERN HIGHWAY	104	MIDNIGHT	2	NIL	A & C	YES	YES	NIL	
26	0200/18	QP	KOKOPO CHIEF	Z1917		1	NIL					NEEDS 30m AT BOW FOR TENDER TO BE ABLE TO ACCESS VESSEL.
27	1030/18	LINX	FILIA ARIEA	47	EVE	2	NIL	B & F	YES	YES	NIL	
28	1300/18	QP	RUBY ACE	75	MIDNIGHT	3	NIL	E	YES	YES	NIL	
29	1600/18	QP	OCEAN HIGHWAY	104	MIDNIGHT	1	NIL	C	YES	YES	NIL	Departure amended from 0400 to 1100hrs due to power issues on board vessel upon berthing.
30	0300/19	QP	MOROBE CHIEF	1935S/1939N	DAY	2	16HRS	B	YES	YES	NIL	Awaiting Filia Ariea to depart.
31	1930/20	QP	HAWAIIAN HIGHWAY	34	DAY	1	NIL	A & C	YES	YES	NIL	
32	1200/21	LINX	SONJA	105AB	EVE	3	NIL	J	YES	YES	NIL	
33	1530/22	QP	BELUGA ACE	15	MIDNIGHT	3	NIL	E	YES	YES	NIL	VESSEL ETA WAS 1730/17TH
34	AM/22*	QP	MORNING MIDAS	1923	DAY	2	NIL	A	YES	YES	NIL	Sunday - awaiting reinspection. BSD – all decks except Decks 9&10 to be discharged. Vessel then went to AKL to discharge NZ cargo then SUV to discharge Fiji cargo. In Suva all remaining Aust cars on Decks 9 and 10 were repositioned across all 10 decks so that vessel could be fogged back in BNE.
35	0100/23	LINX	GOLIATH LEADER	88	DAY	1	NIL	D	YES	YES	NIL	19/12 - no SPI required
36	2359/23	QP	TIJUCA	CF932	DAY	2	NIL	C	YES	YES	NIL	
37	1000/24	LINX	TRANS FUTURE 5	121		1	NIL					Fogged on arrival. Failed re-inspection and vacated to Pinkenba. Labour booked 0700/26 (Not worked). Vessel returned 28/12 and completed discharge
38	0200/26	QP	SZECHUEN	1920N	EVE	2	8HRS	B	YES	YES	NIL	Delay berthing 1.5 hours waiting for Tijuca to depart. Trailers not used.
39	1300/26	QP	GLOVIS CHORUS**	75	MIDNIGHT	1	NIL	A & C	YES	YES	NIL	2000/12 ETA, REQUIRES SPI AND MOL WILL NOT BOOK LABOUR UNTIL CLEARED. Vessel did not get clearance to proceed to berth until 16th; MOL elected to continue to hold vessel out (after securing a lay up berth at AAT for PM/16th to undergo fogging); Vessel was inbound 16th and had to turn back to anchor; Pressure was put on MOL by Glovis who had trains on board for PKL. Decision was made on 17th for vessel to change port rotation and go straight to PKL then MEL then BNE to discharge.
40	AM/27*	LINX	TRANS FUTURE 5	121	DAY	3	NIL	E	YES	YES	NIL	Fogged on arrival 1400/24TH. Failed re-inspection and vacated to Pinkenba at 0600/26th. Labour was booked for 0700/26th but did not work; Vessel Re-fogged 0800/26th and reinspected 0600/27th. Vessel returned 28/12 and completed discharge
41	1200/28	LINX	SONJA	105BA	MIDNIGHT	2	NIL	B	YES	YES	NIL	

42	2300/28	QP	ADRIATIC HIGHWAY	111	EVE	1	NIL	A, C, D	YES	YES	NIL	
43	1930/29	QP	SOFRANA SURVILLE	258N	DAY	3	NIL	B	YES	YES	NIL	
44	0200/30	QP	CARRERA	1924	DAY	1	NIL	C	YES	YES	NIL	Fogged on arrival and allowed to lay-up over new years period. Labour booked 0700/1
45	1030/30	QP	MELANESIAN PRIDE	018S/019N	EVE	2	NIL	B	YES	YES	NIL	
46	1400/30	LINX	JUPITER LEADER	31	EVE	3	NIL	E	YES	YES	NIL	Fogged on arrival. Vessel failed to properly vent before DoA re-inspection. Labour booked 2300/1 (Not worked). Re-inspection completed AM 2nd and vessel commenced discharge at 1400/2 with a scratch gang. Vessel completed 1500/3

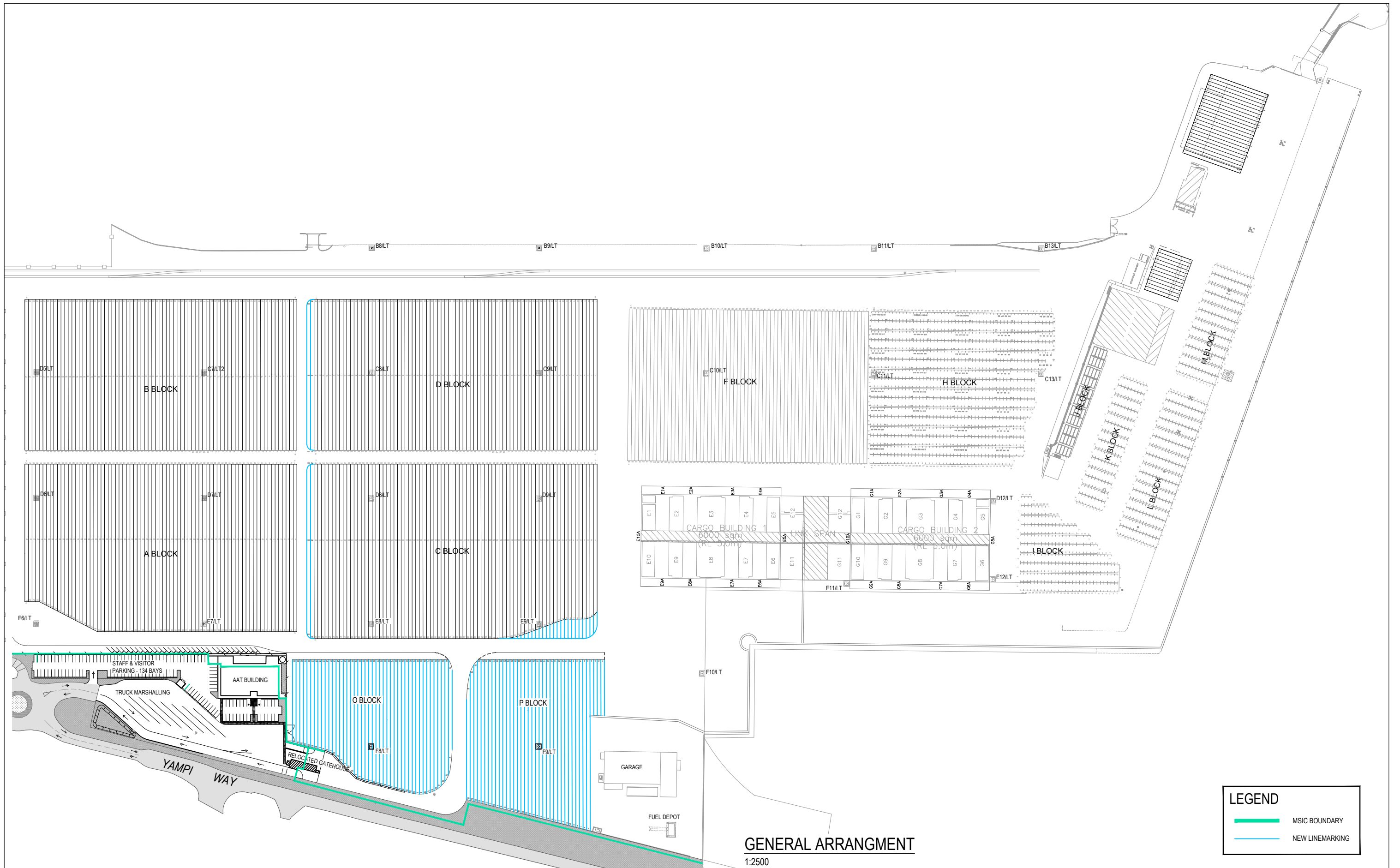
**Legend - Berth # and Laydown**

	Primary
	Secondary
	Tertiary

SUMMARY	LINX	QUBE	COMMENT
<b>TOTAL VESSELS FOR MONTH</b>			
<b>GREEN BERTH (Primary)</b>	15	26	
<b>ORANGE BERTH (Secondary)</b>	0	0	
<b>RED BERTH (Tertiary)</b>	0	0	
<b>GREEN LAYDOWN (Primary)</b>	15	26	
<b>ORANGE LAYDOWN (Secondary)</b>	0	0	
<b>RED LAYDOWN (Tertiary)</b>	0	0	
<b>NUMBER OF BERTHING DELAYS</b>	5	4	
<b>NUMBER OF MACHINERY ISSUES/REQUESTS NOT MET</b>	0	0	

PART B: TERMINAL LAYOUT PLAN FOR EACH TERMINAL



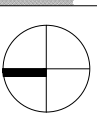
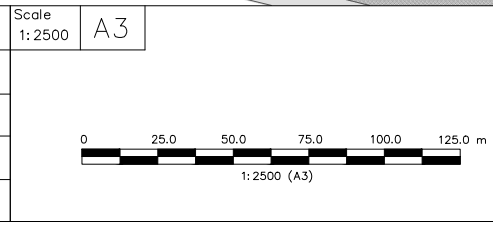


**GENERAL ARRANGMENT**  
1:2500

LEGEND	
	MSIC BOUNDARY
	NEW LINEMARKING

B	31/10/19	REVISED FOR CLIENT COMMENTS	PL	DM	DM
A	16/10/19	DRAFT FOR CLIENT REVIEW	PL	DM	DM
REV	DATE	REVISION DETAILS	BY	VER.	APP.
REVISIONS AND ISSUES					

Prepared By	Signed	Date	Scale
PL		31/10/19	1:2500
Verified By	Signed	Date	
DM		31/10/19	
Approved By	Signed	Date	
DM		31/10/19	
Horizontal Datum	N/A		
Vertical Datum	AHD		



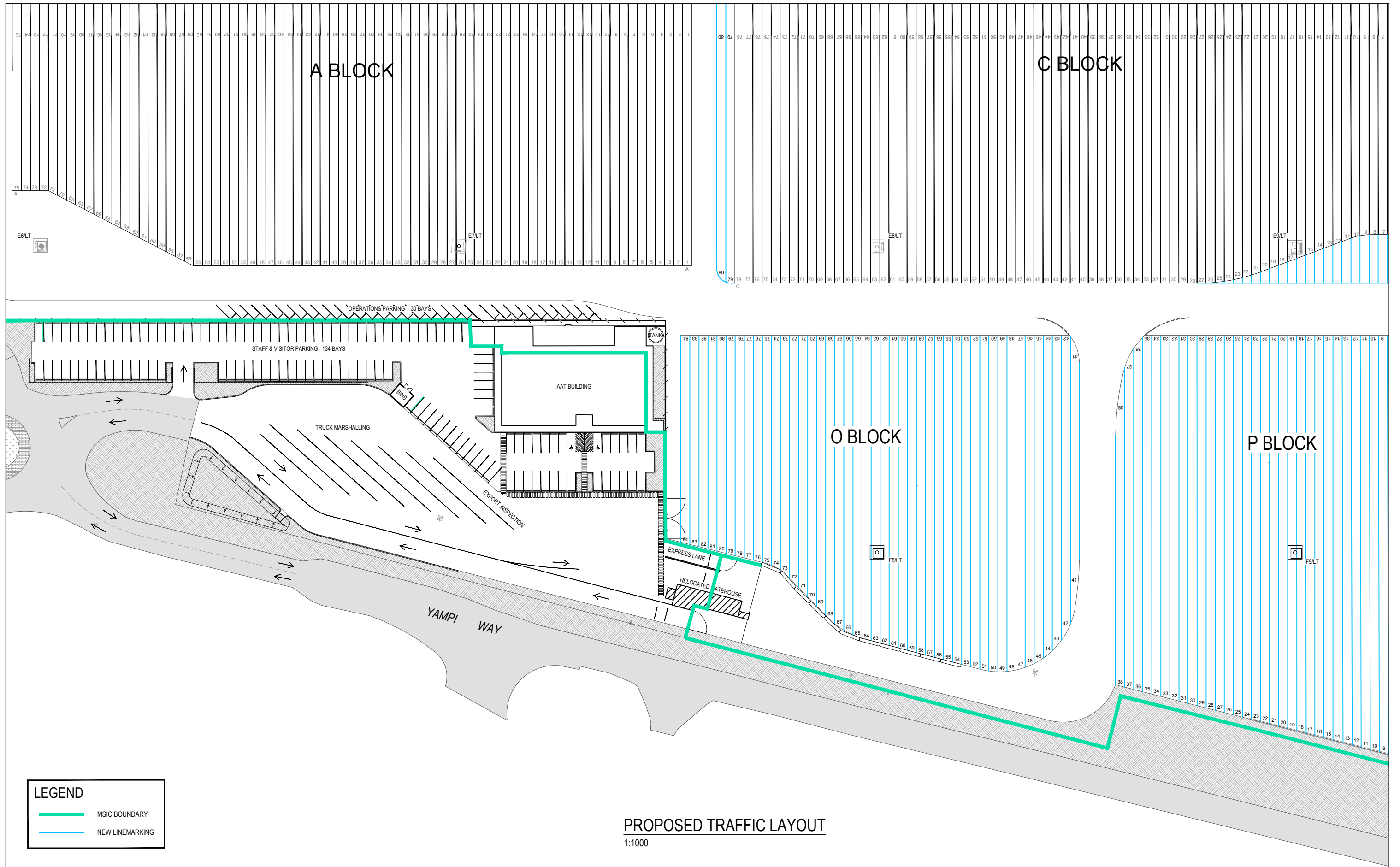
Client:



James Rose Consulting  
ABN 64 175 064 511  
Unit F21,1-15 Barr Street  
BALMAIN NSW 2041  
PH 02 9555 8588  
FAX 02 9555 8599  
mail@jamesrose.com.au  
www.jamesrose.com.au

Project			
AAT PORT KEMBLA TERMINAL REDEVELOPMENT			
Drawing Title			
GENERAL ARRANGMENT			
Status	DRAFT	Project No.	433
		Drawing No.	433-C-01
		Rev.	B





**PROPOSED TRAFFIC LAYOUT**  
1:1000

LEGEND	
	MSIC BOUNDARY
	NEW LINEMARKING

B	31/10/19	REVISED FOR CLIENT COMMENTS	PL	DM	DM
A	16/10/19	DRAFT FOR CLIENT REVIEW	PL	DM	DM
REV	DATE	REVISION DETAILS	BY	VER.	APP.
REVISIONS AND ISSUES					

Prepared By PL	Signed	Date 31/10/19	Scale 1:1000	A3
Verified By DM	Signed	Date 31/10/19		
Approved By DM	Signed	Date 31/10/19		
Horizontal Datum	N/A			
Vertical Datum	AHD			

0 25.0 50.0 75.0 100.0 125.0 m  
1:2500 (A3)

Client:

James Rose Consulting  
ABN 64 175 064 511  
Unit F21,1-15 Barr Street  
BALMAIN NSW 2041  
PH 02 9555 8588  
FAX 02 9555 8599  
mail@jamesrose.com.au  
www.jamesrose.com.au

Project  
**AAT PORT KEMBLA  
WOLLONGONG, NSW**

Drawing Title  
**PROPOSED TRAFFIC LAYOUT**

Status	DRAFT	Project No.	433	Drawing No.	433-C-02	Rev.	B
© James Rose Consulting							

**PART C: TERMINAL USERS IN WHICH QUBE OR A QUBE RELATED ENTITY HAS**

Qube or a Qube Related Entity has a direct or indirect interest greater than or equal to 20% in the following Terminal Users who provided Stevedoring Services or PDI Operator Services at the following Terminals during the period covered by this Compliance Report:

**Port Kembla Terminal**

Qube Ports Pty Ltd ACN 123 021 492  
Prixcar Services Pty Ltd ACN 007 063 505

**Brisbane Terminal**

Qube Ports Pty Ltd ACN 123 021 492  
Prixcar Services Pty Ltd ACN 007 063 505

AS AN INTEREST